

Meteorologische Beobachtungen: Monat Juli 2023

Meteorologische Station Basel-Binningen

317 m ü. M

47° 33' N / 7° 35' E

| Tag | Temperatur | | | | Luft- druck Mittel | Feuchte rel % 12:45 Mittel | Bewöl- kung in % | Nieder- schlag in mm | Sonne Std | Global- strahl. Wh/m ² | Wind | | | |
|-----|----------------|------|------|------|--------------------------|----------------------------------|------------------------|----------------------------|--------------|---|-----------------|-------------|----|------|
| | Mittel 24-h | Abw. | Min | Max | | | | | | | Mittel m/sec | Max Km/h | | |
| 1. | 18.9 | -0.2 | 15.5 | 22.4 | 975.4 | 51 | 63 | 67 | 1.0 | 4.1 | 4255 | 1.6 | 22 | |
| 2. | 20.0 | 0.9 | 16.5 | 24.6 | 977.6 | 61 | 57 | 53 | - | 6.2 | 5203 | 2.5 | 39 | |
| 3. | 20.4 | 1.3 | 17.0 | 24.5 | 979.1 | 47 | 52 | 70 | - | 7.5 | 6410 | 2.4 | 40 | |
| 4. | 20.8 | 1.6 | 17.5 | 25.6 | 978.6 | 60 | 67 | 70 | 1.0 | 6.2 | 5897 | 1.5 | 33 | Gew |
| 5. | 18.9 | -0.3 | 15.8 | 23.2 | 979.5 | 56 | 59 | 47 | 5.1 | 9.1 | 6691 | 2.6 | 46 | |
| 6. | 19.8 | 0.6 | 14.0 | 25.9 | 980.9 | 44 | 52 | 47 | - | 12.4 | 7832 | 1.1 | 27 | |
| 7. | 23.4 | 4.2 | 13.0 | 31.5 | 980.8 | 37 | 45 | 13 | 21.0 | 14.2 | 8232 | 1.4 | 27 | Gew |
| 8. | 22.7 | 3.5 | 18.0 | 30.1 | 982.2 | 71 | 71 | 80 | - | 6.5 | 5137 | 1.5 | 36 | |
| 9. | 26.5 | 7.3 | 18.1 | 34.8 | 982.5 | 41 | 52 | 33 | 7.5 | 14.1 | 7874 | 1.9 | 30 | Gew |
| 10. | 25.3 | 6.1 | 19.1 | 30.8 | 984.0 | 61 | 69 | 40 | - | 10.6 | 6422 | 1.5 | 49 | Gew |
| 11. | 26.4 | 7.3 | 20.2 | 35.4 | 978.1 | 49 | 58 | 47 | 6.9 | 12.7 | 7747 | 1.5 | 83 | |
| 12. | 22.3 | 3.2 | 19.7 | 26.0 | 978.1 | 65 | 70 | 83 | - | 4.4 | 4552 | 2.1 | 37 | |
| 13. | 21.3 | 2.2 | 18.1 | 25.7 | 981.7 | 38 | 46 | 30 | - | 12.9 | 7883 | 2.0 | 40 | |
| 14. | 22.5 | 3.3 | 14.0 | 30.3 | 978.1 | 37 | 50 | 57 | - | 13.1 | 7317 | 1.2 | 20 | |
| 15. | 24.7 | 5.5 | 18.9 | 31.5 | 974.7 | 43 | 60 | 40 | 8.7 | 12.4 | 6922 | 2.3 | 52 | Gew |
| 16. | 20.0 | 0.7 | 16.5 | 24.3 | 981.6 | 62 | 66 | 77 | - | 6.1 | 5048 | 1.4 | 25 | |
| 17. | 21.7 | 2.4 | 18.3 | 26.3 | 984.0 | 47 | 55 | 77 | - | 7.6 | 5902 | 1.5 | 29 | Gew |
| 18. | 22.1 | 2.7 | 15.0 | 29.4 | 981.0 | 59 | 60 | 33 | 0.3 | 11.8 | 6670 | 1.5 | 42 | |
| 19. | 23.9 | 4.5 | 17.9 | 29.0 | 978.4 | 44 | 58 | 27 | - | 12.5 | 7712 | 2.4 | 51 | |
| 20. | 22.0 | 2.6 | 17.1 | 26.4 | 977.5 | 44 | 49 | 43 | - | 12.4 | 7334 | 1.6 | 31 | |
| 21. | 18.8 | -0.7 | 15.0 | 23.1 | 976.5 | 66 | 66 | 63 | 0.6 | 4.5 | 4510 | 1.4 | 36 | |
| 22. | 20.7 | 1.0 | 14.2 | 27.1 | 979.4 | 37 | 48 | 20 | - | 13.0 | 7717 | 1.7 | 36 | Gew |
| 23. | 22.2 | 2.4 | 14.6 | 28.8 | 976.8 | 35 | 50 | 83 | 1.8 | 7.6 | 5962 | 1.6 | 30 | Gew |
| 24. | 19.8 | 0.0 | 17.5 | 23.0 | 972.1 | 87 | 81 | 97 | 7.6 | 1.6 | 2447 | 1.6 | 56 | Gew |
| 25. | 17.3 | -2.5 | 14.5 | 21.4 | 972.1 | 57 | 76 | 90 | 9.1 | 3.7 | 4420 | 3.1 | 57 | |
| 26. | 15.8 | -4.1 | 12.2 | 20.5 | 979.6 | 63 | 70 | 80 | 0.1 | 5.2 | 5269 | 2.2 | 43 | |
| 27. | 19.0 | -0.9 | 12.7 | 26.0 | 976.0 | 55 | 65 | 60 | - | 7.1 | 5138 | 1.7 | 37 | |
| 28. | 21.1 | 1.1 | 16.0 | 26.3 | 975.4 | 54 | 66 | 80 | 0.0 | 4.8 | 4133 | 1.9 | 53 | Fgew |
| 29. | 20.4 | 0.4 | 17.6 | 26.4 | 976.1 | 58 | 79 | 93 | 2.4 | 2.8 | 3450 | 1.7 | 50 | Fgew |
| 30. | 19.9 | -0.1 | 16.2 | 24.4 | 980.0 | 43 | 59 | 60 | - | 10.2 | 6829 | 2.8 | 47 | |
| 31. | 19.9 | -0.1 | 13.4 | 25.5 | 978.0 | 52 | 60 | 90 | 2.6 | 6.1 | 5644 | 1.8 | 33 | |

| | | | | | | | | | | | | | |
|---------------|------|--|------|------|-------|----|----|----|------|-------|------|-----|--|
| Mittel | 21.2 | | 16.3 | 26.8 | 978.6 | 52 | 61 | 60 | | | 6018 | 1.8 | |
| Summe | | | | | | | | | 75.7 | 263.4 | | | |
| Norm | 20.2 | | 15.1 | 26.2 | 979.8 | | 65 | 57 | 90 | 254 | | 2.0 | |

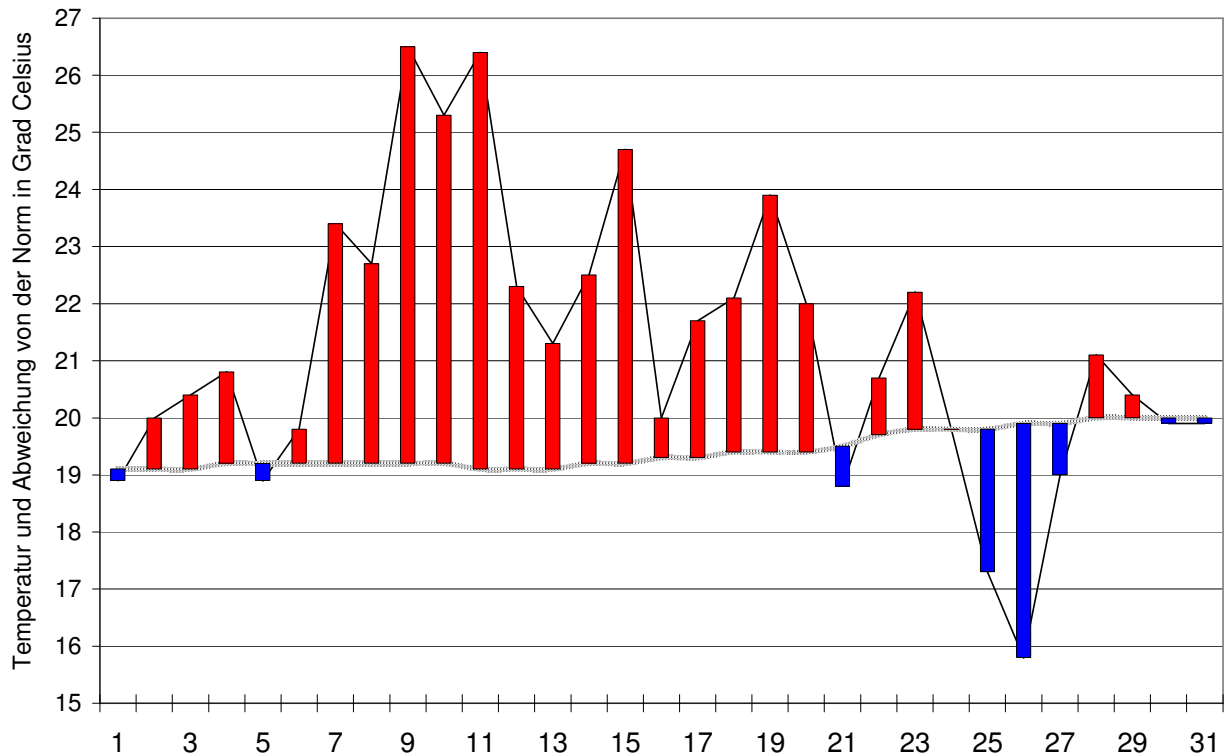
| | | | | | | | | | | | | | | | | | | | |
|--|------|---|-------------|-------|---|--------------------------------------|------|-------|---------------|------------------|-----|----------|------|------------|-----------------|----|----|-----|----|
| Luftdruck auf Meeresniveau: 1015.0 hPa | | Minimum : 970.8 hPa am 25. um 12:45 h | | | | Maximum: 986.3 hPa am 10. um 06:45 h | | | | | | | | | | | | | |
| Temperaturmittel 06:45 h : 18.2°C | | 12:45 h 24.7°C | | | | 18:45 h 25.0°C | | | | | | | | | | | | | |
| Spezialtage | Hell | trüb | Som- mer | Hitze | Niederschlag (mm oder l/m ²) | | | Nebel | ohne Sonne | Windmax (m/s) | | Gewitter | Reif | Ha- gel | schwüle Tage | | | | |
| | | | | | ≥0.1 | ≥0.3 | ≥1.0 | | | ≥15 | ≥26 | Nahe | Alle | | | | | | |
| Anzahl Tage | 1 | 6 | 21 | 7 | 15 | 14 | 12 | 0 | 0 | 3 | 0 | 9 | 11 | 0 | 11 | | | | |
| Norm | 4 | 9 | 18 | 7 | 13 | 12 | 10 | 0.3 | 1 | 2 | - | 4 | 8 | 0 | 10 | | | | |
| Windmaximum: 28.7 m/s am 20. um 17:00 h aus W | | Relative Feuchte (Formel SMA): 55% | | | | | | | | | | | | | | | | | |
| Windrichtungs- häufigkeiten (Termine): | | N | 2 | NE | 1 | E | 13 | SE | 9 | S | 2 | SW | 5 | W | 20 | NW | 31 | CAL | 10 |

| | | | | | | | | |
|-----------------------------------|---|--------------|---|-----------------|--------------|---|--------------|---|
| Gradtagzahlen 10°C / 18°C: | 0 | 12°C / 20°C: | 0 | Heiztage | 10°C / 18°C: | 0 | 12°C / 20°C: | 0 |
|-----------------------------------|---|--------------|---|-----------------|--------------|---|--------------|---|

Der Verlauf der Temperaturen im Monat Juli 2023

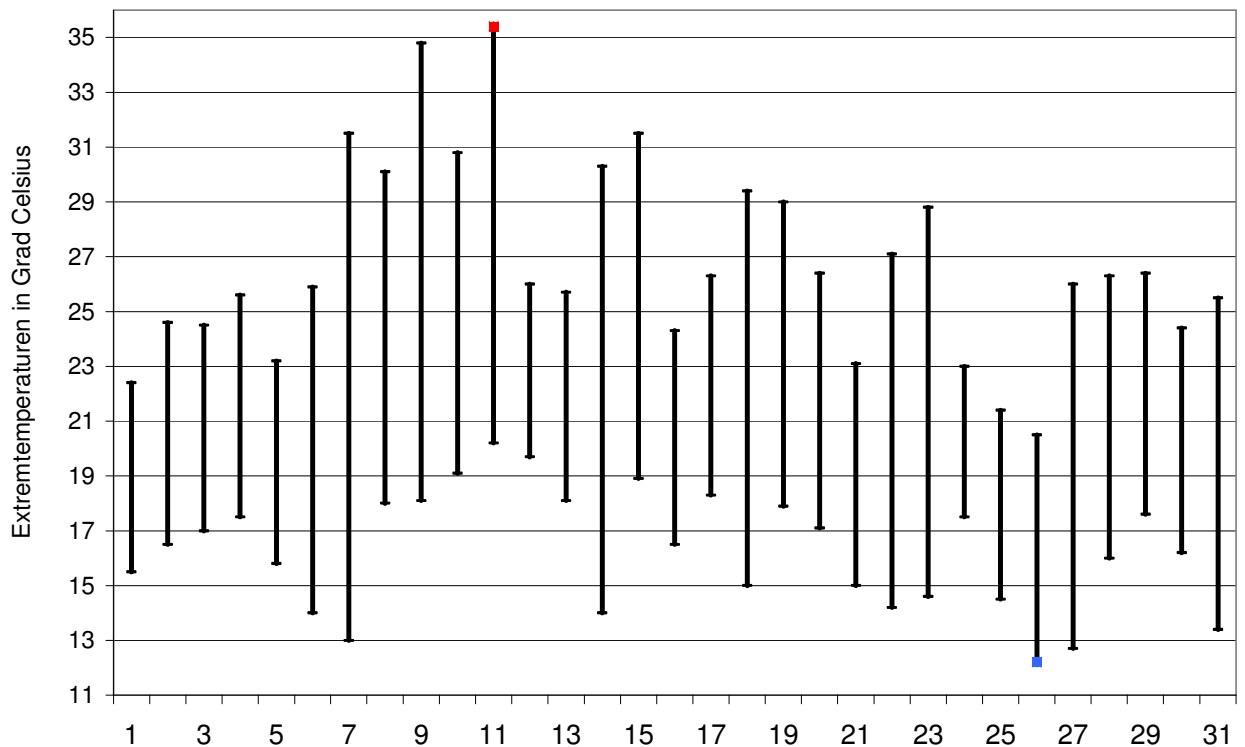
Meteorologische Station Basel Binningen

Tagesmittelwerte Temperatur und deren Abweichung von der Normperiode (1931-2020)
 aufwärts gerichtete Balken = zu warm, abwärts gerichtete Balken = zu kalt



Tägliche Minima und Maxima der Temperatur

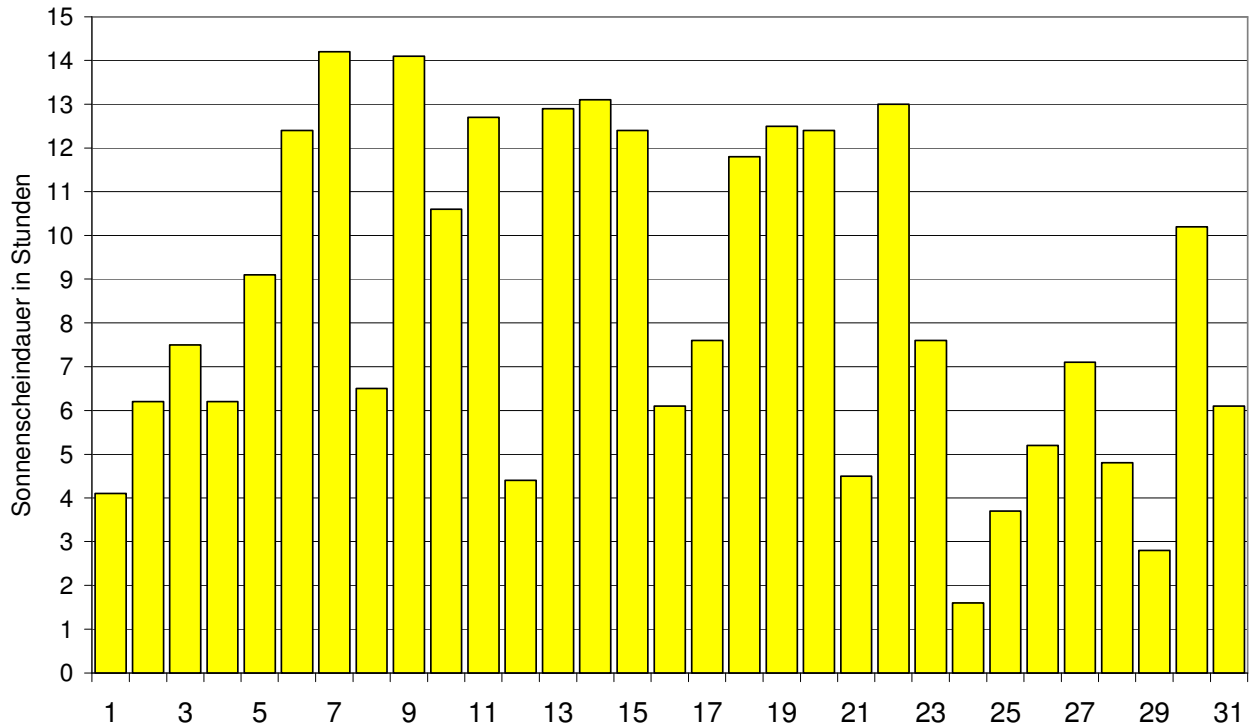
oberes Balkenende = Maximum, unteres Balkenende = Minimum



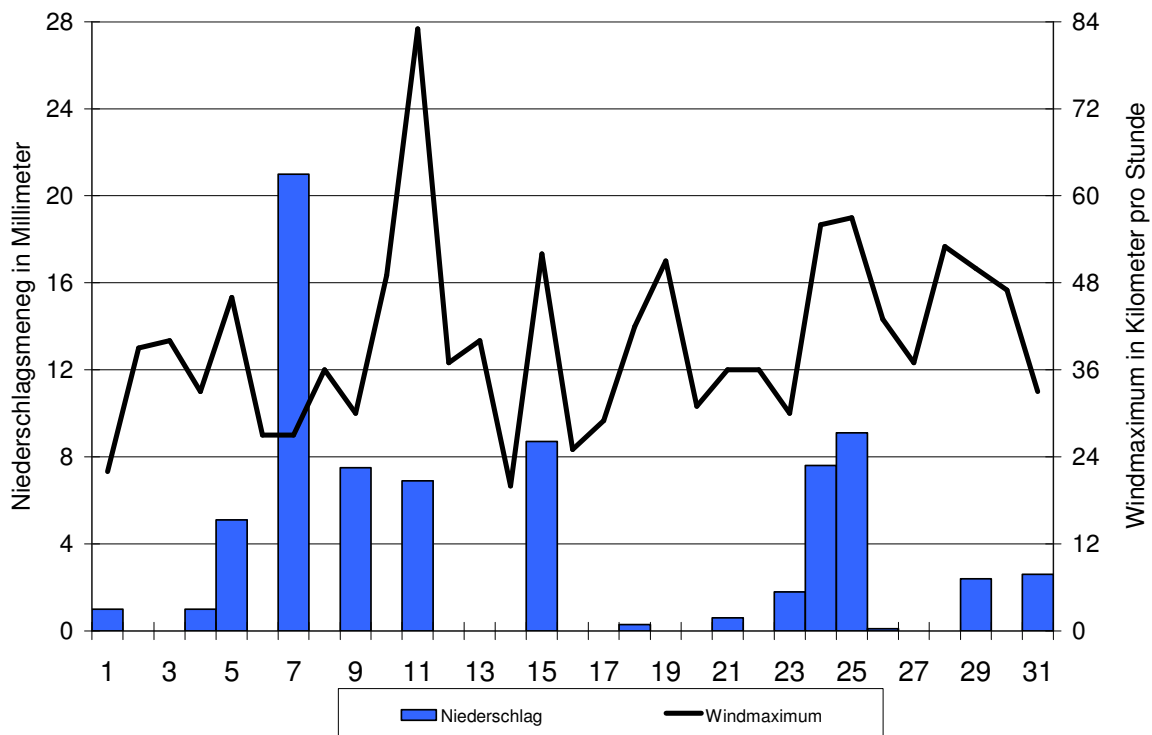
Der Verlauf von Sonnenscheindauer, Niederschlagsmenge und Windgeschwindigkeit im Monat Juli 2023

Meteorologische Station Basel Binningen

Tagessummen der Sonnenscheindauer

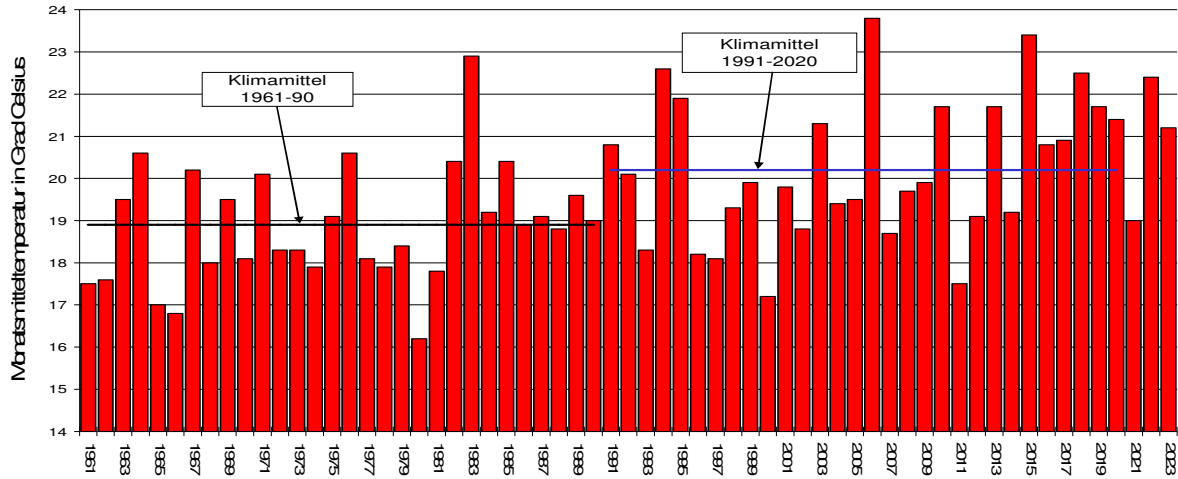


Tagessummen der Niederschlagsmenge (Balken) und maximale tägliche Windgeschwindigkeit (Linie)

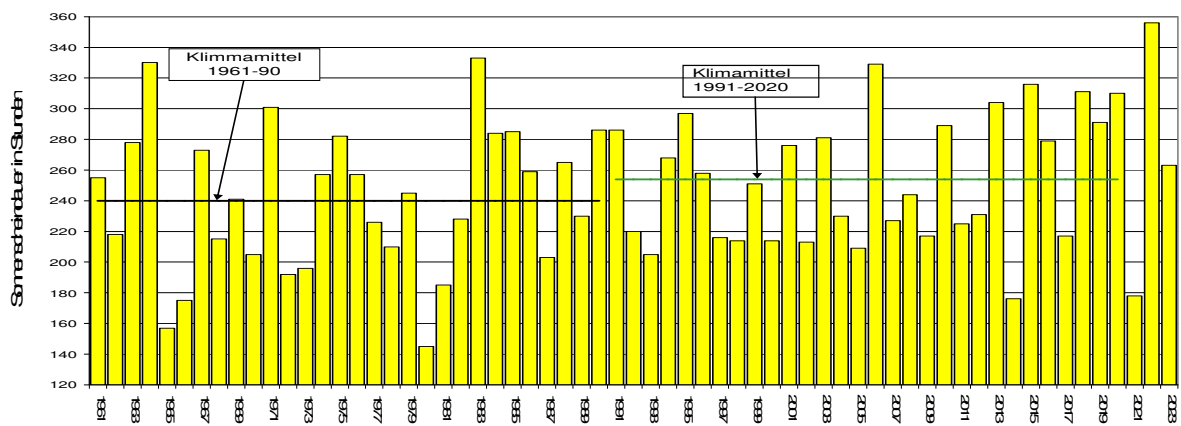


Die Entwicklung von Temperatur, Sonnenscheindauer und Niederschlagsmenge im Monat Juli seit 1961: Meteorologische Station Basel Binningen

Monatsmitteltemperaturen



Monatliche Sonnenscheindauer



Monatliche Niederschlagsmengen

