

Meteorologische Beobachtungen: Monat Oktober 2017

Meteorologische Station Basel-Binningen

317 m ü. M

47° 33' N / 7° 35' E

| Tag | Temperatur | | | | Luft- druck Mittel | Feuchte rel % 12:45 Mittel | Bewöl- kung in % | Nieder- schlag in mm | Sonne Std | Global- strahl. Wh/m ² | Wind | | Schnee Höhe cm |
|-----|----------------|------|------|------|--------------------------|----------------------------------|------------------------|----------------------------|--------------|---|--------|-----|----------------------|
| | Mittel 24-h | Abw. | Min | Max | | | | | | | Mittel | Max | |
| 1. | 13.1 | 0.8 | 8.3 | 18.5 | 984.4 | 63 | 77 | 83 | - | 6.7 | 3935 | 0.5 | 21 |
| 2. | 14.6 | 2.5 | 11.0 | 18.9 | 982.9 | 72 | 82 | 97 | 3.8 | - | 1042 | 1.2 | 24 |
| 3. | 14.5 | 2.5 | 13.2 | 17.6 | 983.8 | 77 | 79 | 60 | 10.8 | 3.5 | 2236 | 1.5 | 53 |
| 4. | 10.4 | -1.4 | 6.3 | 16.4 | 988.0 | 65 | 79 | 90 | - | 1.4 | 2581 | 0.4 | 22 |
| 5. | 13.4 | 1.7 | 5.2 | 22.1 | 981.9 | 47 | 64 | 43 | 7.2 | 8.6 | 4168 | 1.0 | 54 |
| 6. | 10.0 | -1.5 | 7.7 | 13.3 | 984.9 | 64 | 77 | 77 | 0.1 | 4.1 | 2516 | 1.0 | 40 |
| 7. | 10.2 | -1.1 | 4.9 | 15.4 | 986.2 | 59 | 73 | 60 | 1.0 | 5.4 | 3438 | 0.4 | 25 |
| 8. | 11.0 | -0.1 | 9.6 | 12.8 | 982.9 | 89 | 86 | 97 | 2.5 | - | 727 | 0.9 | 26 |
| 9. | 11.5 | 0.6 | 9.8 | 15.4 | 983.7 | 79 | 87 | 83 | 0.5 | 1.6 | 1731 | 0.9 | 22 |
| 10. | 11.6 | 0.9 | 6.0 | 18.8 | 983.9 | 53 | 76 | 83 | - | 6.6 | 3592 | 0.3 | 23 |
| 11. | 13.8 | 3.3 | 9.1 | 21.4 | 983.7 | 53 | 73 | 20 | - | 10.2 | 3843 | 0.3 | 20 |
| 12. | 13.7 | 3.4 | 9.0 | 20.5 | 987.9 | 57 | 74 | 60 | - | 5.3 | 2786 | 0.6 | 36 |
| 13. | 14.3 | 4.1 | 9.1 | 22.7 | 989.9 | 58 | 76 | 10 | - | 10.0 | 3675 | 0.4 | 18 |
| 14. | 14.4 | 4.4 | 7.7 | 23.5 | 990.0 | 61 | 77 | 7 | - | 9.7 | 3576 | | 18 |
| 15. | 15.3 | 5.4 | 9.1 | 23.5 | 988.8 | 90 | 75 | 0 | - | 9.8 | 3586 | | 26 |
| 16. | 16.5 | 6.8 | 10.0 | 25.1 | 988.0 | 51 | 66 | 0 | - | 9.6 | 3515 | | 29 |
| 17. | 15.2 | 5.7 | 9.8 | 25.0 | 984.7 | 51 | 67 | 37 | - | 9.7 | 3567 | | 24 |
| 18. | 14.2 | 4.9 | 8.2 | 22.9 | 978.9 | 48 | 65 | 20 | - | 9.6 | 3400 | 1.3 | 29 |
| 19. | 14.7 | 5.5 | 10.0 | 23.0 | 976.6 | 50 | 65 | 60 | - | 4.9 | 2581 | 1.4 | 24 |
| 20. | 13.7 | 4.6 | 10.5 | 17.5 | 979.0 | 64 | 77 | 93 | 0.2 | 0.4 | 1017 | 1.6 | 34 |
| 21. | 15.1 | 6.2 | 12.0 | 22.1 | 980.6 | 60 | 78 | 90 | 2.4 | 3.3 | 2035 | 2.0 | 60 |
| 22. | 10.5 | 1.8 | 9.3 | 13.2 | 982.7 | 59 | 67 | 73 | 1.2 | 3.1 | 2030 | 3.4 | 51 |
| 23. | 9.5 | 1.0 | 8.0 | 12.3 | 986.3 | 75 | 84 | 93 | 0.6 | 0.2 | 1172 | 2.2 | 40 |
| 24. | 12.2 | 4.0 | 8.7 | 19.5 | 988.7 | 59 | 77 | 47 | - | 6.1 | 2754 | 1.2 | 17 |
| 25. | 13.7 | 5.7 | 7.7 | 21.5 | 987.6 | 56 | 75 | 80 | - | 7.9 | 3130 | 1.2 | 19 |
| 26. | 14.1 | 6.3 | 9.1 | 22.7 | 987.9 | 66 | 80 | 37 | - | 8.0 | 2839 | 1.1 | 16 |
| 27. | 11.1 | 3.5 | 9.8 | 14.5 | 989.3 | 89 | 88 | 70 | 2.1 | 2.4 | 992 | 2.0 | 49 |
| 28. | 7.5 | 0.1 | 3.0 | 12.2 | 989.3 | 62 | 79 | 67 | - | 2.0 | 2007 | 2.0 | 44 |
| 29. | 9.9 | 2.7 | 7.6 | 12.0 | 981.5 | 77 | 79 | 100 | 2.5 | - | 592 | 3.7 | 67 |
| 30. | 5.3 | -1.7 | 2.4 | 10.1 | 987.5 | 70 | 79 | 70 | - | 1.8 | 1773 | 1.0 | 25 |
| 31. | 3.9 | -3.0 | -1.0 | 10.5 | 989.1 | 57 | 75 | 10 | - | 8.8 | 2793 | 0.9 | 16 |

| | | | | | | | | | | | | | |
|---------------|------|--|-----|------|-------|----|----|----|------|-------|------|-------|--|
| Mittel | 12.2 | | 8.1 | 18.2 | 985.2 | 64 | 76 | 59 | | | 2569 | (1.3) | |
| Summe | | | | | | | | | 34.9 | 160.7 | | | |
| Norm | 10.4 | | 6.7 | 15.6 | 980.7 | | 84 | 66 | 52 | 122 | | 2.1 | |

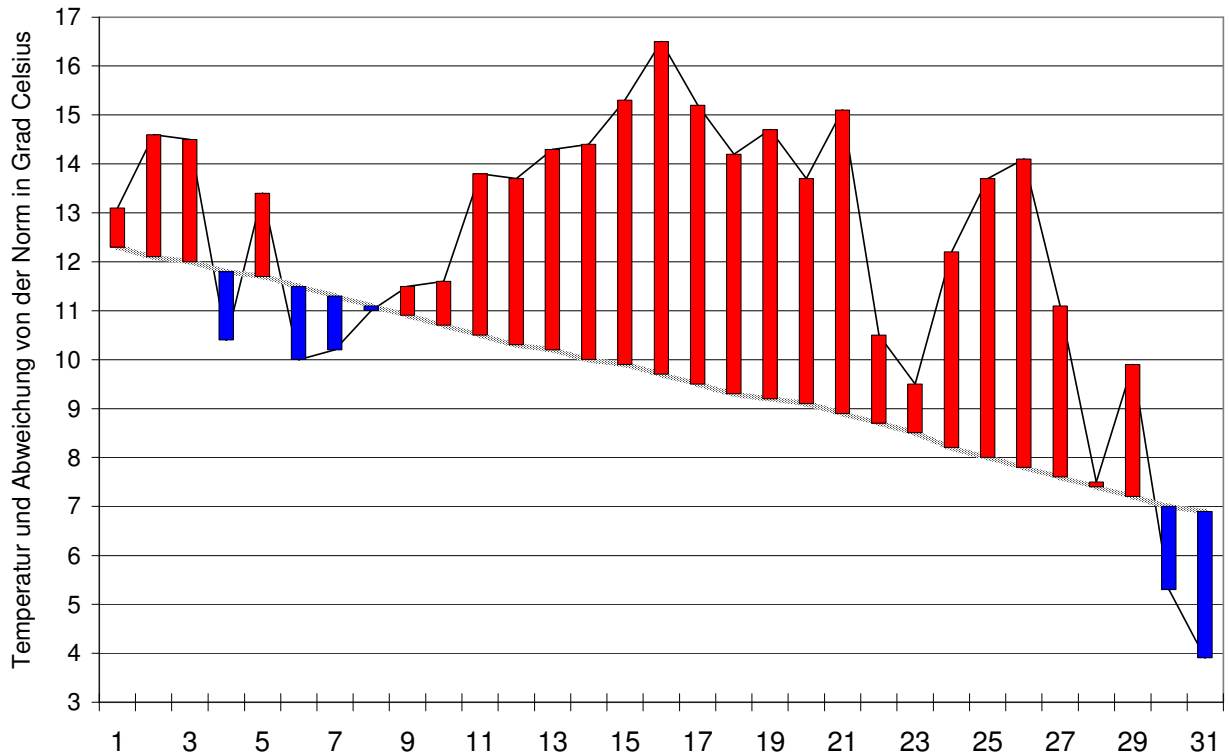
| | | | | | | | | | | | | | | | | | | | | | |
|---|------|---------------------------------------|-------------|--|---|--------------------------------------|------|-------|---------------|------------------|-----|----------|------|------------|----------------|-----------------|----|----|----|-----|----|
| Luftdruck auf Meeresniveau: 1023.1 hPa | | Minimum : 975.9 hPa am 19. um 18:45 h | | | | Maximum: 992.4 hPa am 27. um 18:45 h | | | | | | | | | | | | | | | |
| Temperaturmittel 06:45 h : 9.0 °C | | 12:45 h 16.2°C | | | | 18:45 h 13.4°C | | | | | | | | | | | | | | | |
| Spezialtage | Hell | trüb | Som- mer | Frost | Niederschlag (mm oder l/m ²) | | | Nebel | ohne Sonne | Windmax (m/s) | | Gewitter | Reif | Ha- gel | Schnee fall | Schnee decke | | | | | |
| | | | | | ≥0.1 | ≥0.3 | ≥1.0 | | | ≥15 | ≥26 | Nahe | Alle | | | | | | | | |
| Anzahl Tage | 5 | 10 | 2 | 1 | 13 | 11 | 9 | 1 | 3 | 2 | 0 | 0 | 0 | 1 | 0 | 0 | | | | | |
| Norm | 3 | 13 | 0.6 | 0.9 | 12 | 10 | 8 | 7 | 6 | 2 | - | 0.3 | 0.6 | 2 | 0.1 | 0.2 | | | | | |
| Windmaximu: 18.6 m/s am 29. um 10:00 h aus W | | | | Relative Feuchte (Formel SMA): 79 % | | | | | | | | | | | | | | | | | |
| Windrichtungs- häufigkeiten (Termine): | | | | N | 2 | NE | 2 | E | 22 | SE | 15 | S | 1 | SW | 10 | W | 16 | NW | 10 | CAL | 15 |

| | | | | | | | | |
|-----------------------------------|------|--------------|-------|-----------------|--------------|---|--------------|----|
| Gradtagzahlen 10°C / 18°C: | 61.9 | 12°C / 20°C: | 137.6 | Heiztage | 10°C / 18°C: | 6 | 12°C / 20°C: | 13 |
|-----------------------------------|------|--------------|-------|-----------------|--------------|---|--------------|----|

Der Verlauf der Temperaturen im Monat Oktober 2017

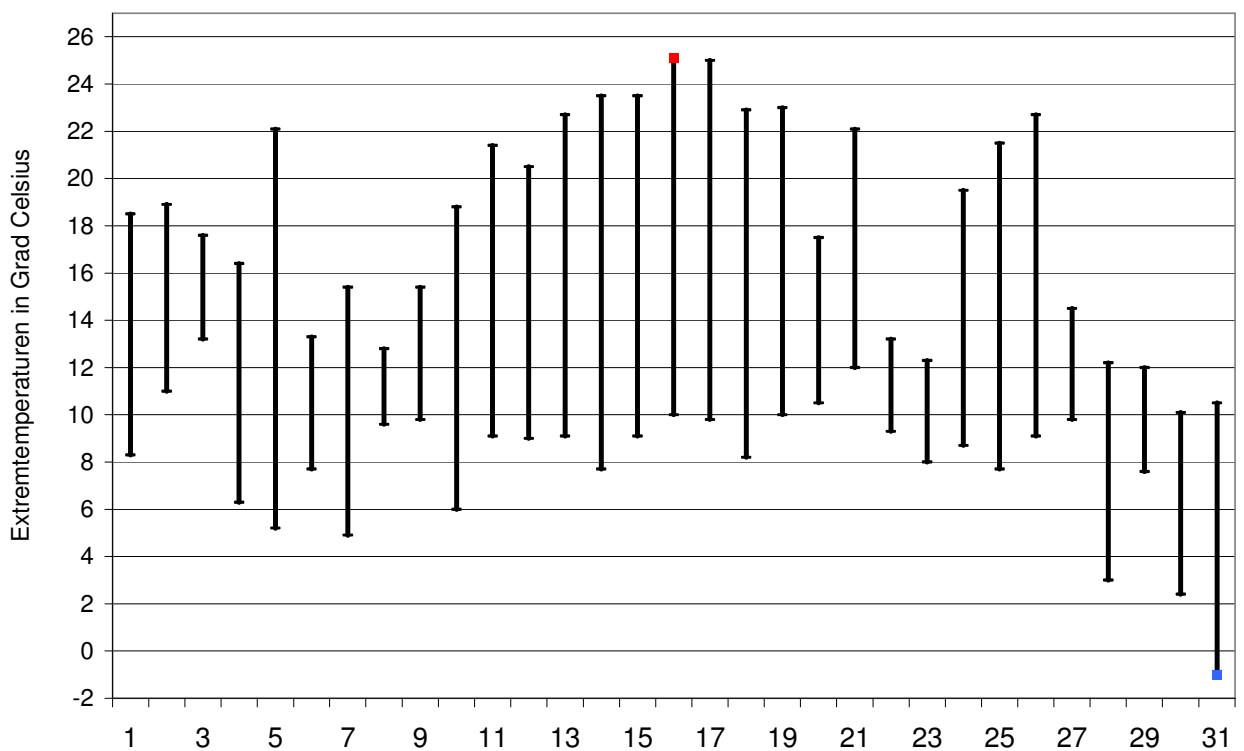
Meteorologische Station Basel Binningen

Tagesmittelwerte Temperatur und deren Abweichung von der Normperiode (1901-1990)
aufwärts gerichtete Balken = zu warm, abwärts gerichtete Balken = zu kalt



Tägliche Minima und Maxima der Temperatur

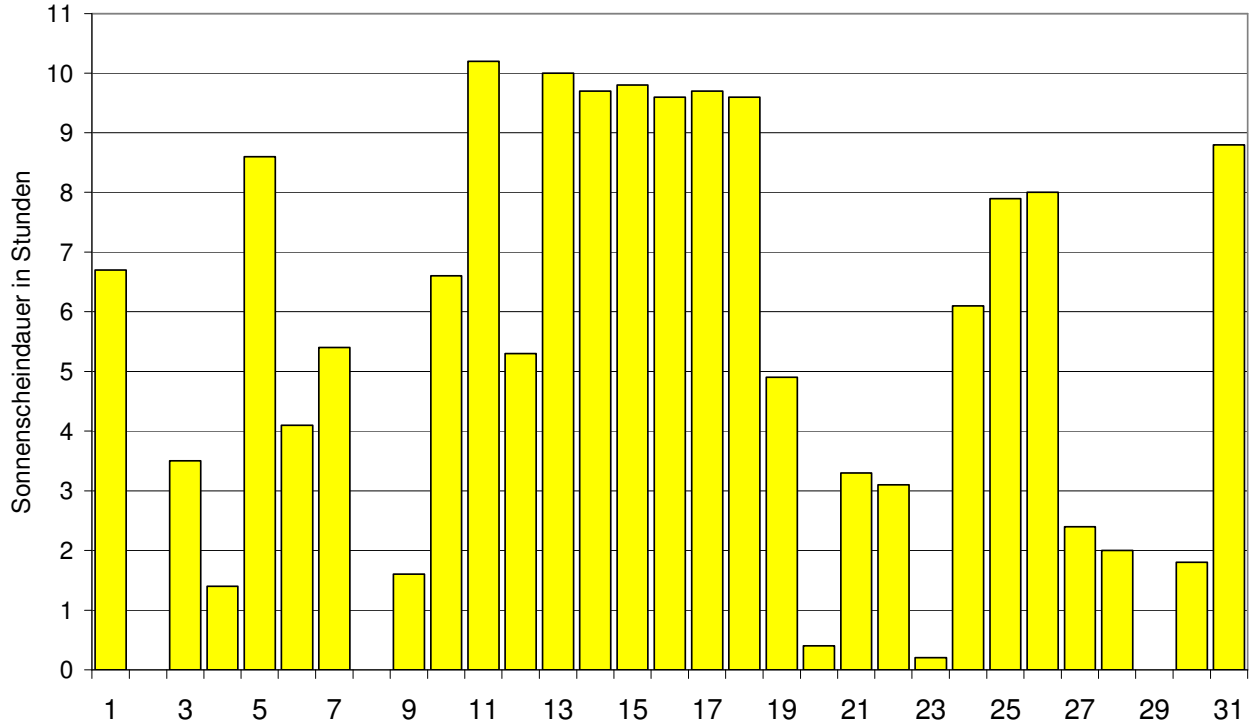
oberes Balkenende = Maximum, unteres Balkenende = Minimum



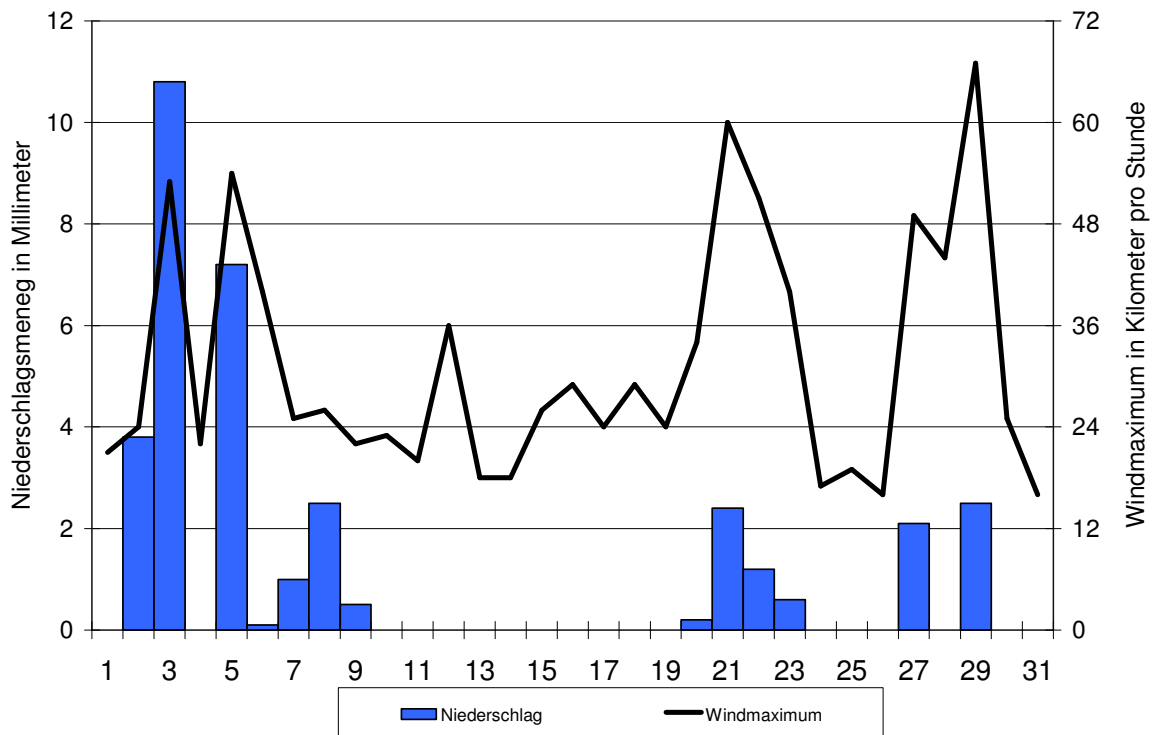
Der Verlauf von Sonnenscheindauer, Niederschlagsmenge und Windgeschwindigkeit im Monat Oktober 2017

Meteorologische Station Basel Binningen

Tagessummen der Sonnenscheindauer

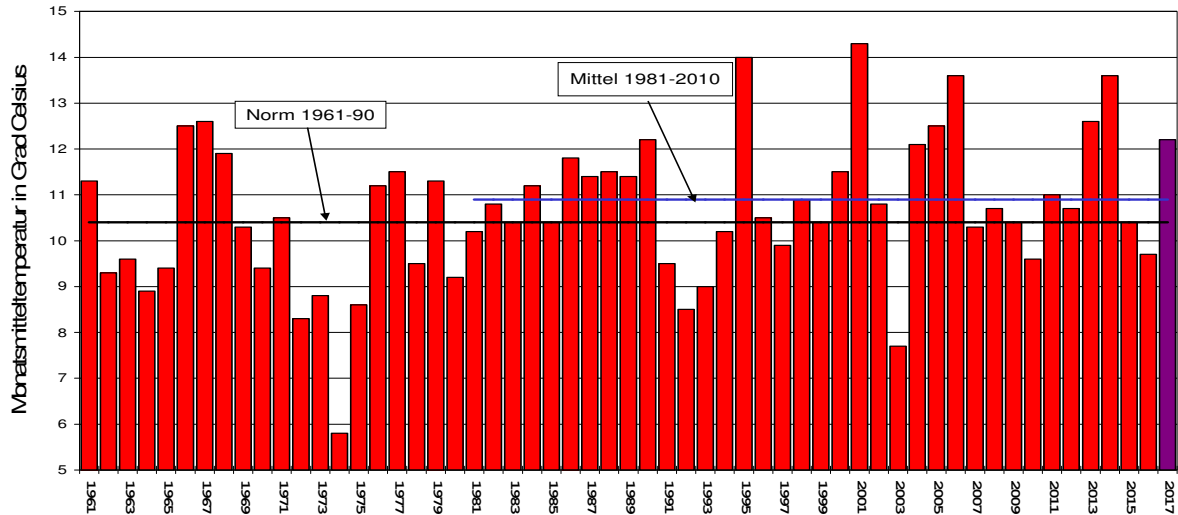


Tagessummen der Niederschlagsmenge (Balken) und maximale tägliche Windgeschwindigkeit (Linie)

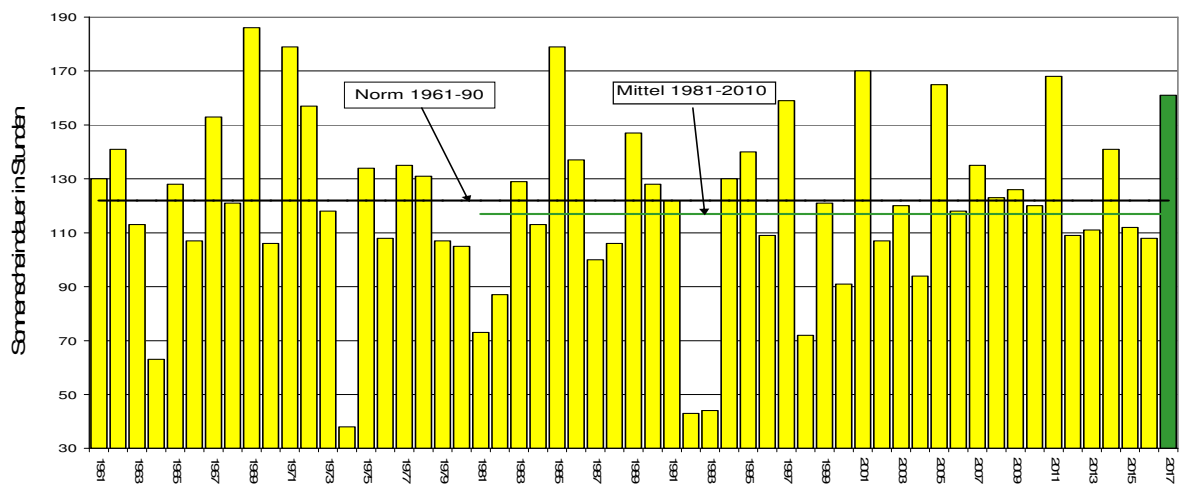


Die Entwicklung von Temperatur, Sonnenscheindauer und Niederschlagsmenge im Monat Oktober seit 1961: Meteorologische Station Basel Binningen

Monatsmitteltemperaturen



Monatliche Sonnenscheindauer



Monatliche Niederschlagsmengen

