

Meteorologische Beobachtungen: Monat März 2017

Meteorologische Station Basel-Binningen

317 m ü. M

47° 33' N / 7° 35' E

| Tag | Temperatur | | | | Luft- druck Mittel | Feuchte | | Bewöl- kung in % | Nieder- schlag in mm | Sonne Std | Global- strahl. Wh/m ² | Wind | | Schnee- höhe cm |
|-----|----------------|------|------|------|--------------------------|----------------|--------|------------------------|----------------------------|--------------|---|-----------------|-------------|-----------------------|
| | Mittel 24-h | Abw. | Min | Max | | rel % 12:45 | Mittel | | | | | Mittel m/sec | Max Km/h | |
| 1. | 7.5 | 4.3 | 4.0 | 10.2 | 971.8 | 60 | 69 | 97 | 6.5 | 0.3 | 1667 | 5.1 | 63 | |
| 2. | 8.1 | 4.8 | 6.1 | 11.3 | 978.7 | 49 | 62 | 90 | 0.3 | 6.9 | 3648 | 3.6 | 64 | |
| 3. | 7.6 | 4.2 | 2.2 | 13.6 | 971.8 | 62 | 59 | 90 | - | 3.3 | 2732 | 3.4 | 43 | |
| 4. | 6.9 | 3.4 | 2.9 | 12.8 | 960.2 | 57 | 72 | 80 | 1.5 | 2.5 | 2528 | 2.3 | 62 | |
| 5. | 7.1 | 3.5 | 3.3 | 12.7 | 968.3 | 39 | 60 | 70 | 9.6 | 3.3 | 2440 | 4.0 | 71 | |
| 6. | 5.5 | 1.8 | 2.7 | 8.4 | 968.4 | 71 | 85 | 97 | 13.4 | - | 870 | 3.2 | 77 | |
| 7. | 5.7 | 1.9 | 4.0 | 9.0 | 979.7 | 68 | 74 | 87 | - | 2.8 | 2307 | 3.2 | 48 | |
| 8. | 5.6 | 1.6 | 0.3 | 11.3 | 985.2 | 60 | 80 | 90 | 1.6 | 0.3 | 1616 | 1.5 | 24 | Reif |
| 9. | 10.9 | 6.8 | 6.5 | 11.8 | 985.4 | 79 | 82 | 93 | 0.5 | - | 510 | 3.4 | 49 | |
| 10. | 9.2 | 4.9 | 6.5 | 14.0 | 988.0 | 55 | 65 | 57 | - | 8.3 | 4121 | 1.3 | 32 | |
| 11. | 8.1 | 3.7 | 0.5 | 16.8 | 982.7 | 38 | 50 | 53 | - | 8.6 | 4143 | 1.8 | 28 | Reif |
| 12. | 8.6 | 4.1 | 1.5 | 17.5 | 976.7 | 44 | 58 | 60 | - | 8.4 | 4079 | 1.1 | 24 | Reif |
| 13. | 8.1 | 3.4 | 1.1 | 15.4 | 985.7 | 41 | 60 | 20 | - | 9.9 | 4397 | 1.4 | 23 | Reif |
| 14. | 8.7 | 3.7 | 1.6 | 16.8 | 993.6 | 39 | 57 | 33 | - | 9.6 | 4410 | 1.4 | 22 | Reif |
| 15. | 9.5 | 4.4 | 2.9 | 16.8 | 992.4 | 94 | 63 | 57 | - | 10.4 | 4481 | 1.4 | 22 | Reif |
| 16. | 10.5 | 5.2 | 2.8 | 18.9 | 986.1 | 54 | 64 | 0 | - | 10.4 | 4725 | 1.1 | 17 | Reif |
| 17. | 12.2 | 6.7 | 6.0 | 20.7 | 980.5 | 44 | 59 | 47 | - | 9.5 | 4555 | 2.8 | 54 | |
| 18. | 10.1 | 4.4 | 8.7 | 11.4 | 979.3 | 70 | 75 | 100 | - | - | 570 | 3.8 | 53 | |
| 19. | 12.6 | 6.7 | 10.8 | 16.5 | 978.9 | 68 | 75 | 93 | 0.0 | 1.4 | 2368 | 2.5 | 44 | |
| 20. | 11.9 | 5.8 | 9.8 | 15.6 | 976.6 | 57 | 68 | 90 | - | 2.6 | 2951 | 2.1 | 33 | |
| 21. | 10.5 | 4.1 | 10.0 | 14.7 | 975.1 | 53 | 64 | 93 | 4.5 | 1.9 | 2843 | 2.8 | 40 | |
| 22. | 7.2 | 0.7 | 3.6 | 9.1 | 975.6 | 75 | 82 | 93 | 1.0 | 0.1 | 2126 | 1.4 | 27 | |
| 23. | 11.1 | 4.4 | 6.2 | 17.2 | 975.1 | 56 | 68 | 70 | - | 9.3 | 4705 | 2.2 | 33 | |
| 24. | 10.3 | 3.4 | 8.6 | 12.6 | 984.0 | 80 | 78 | 100 | - | - | 1819 | 1.9 | 48 | |
| 25. | 10.9 | 3.9 | 5.7 | 17.5 | 982.3 | 57 | 65 | 43 | - | 8.7 | 4937 | 2.1 | 34 | Nebel |
| 26. | 10.1 | 3.0 | 4.4 | 16.0 | 982.8 | 47 | 51 | 77 | - | 9.2 | 4805 | 1.5 | 21 | |
| 27. | 11.3 | 4.1 | 3.3 | 19.7 | 983.8 | 42 | 53 | 20 | - | 11.5 | 5542 | 1.3 | 28 | Reif |
| 28. | 13.0 | 5.7 | 5.5 | 20.6 | 986.5 | 43 | 53 | 17 | - | 10.4 | 5264 | 1.9 | 32 | |
| 29. | 13.0 | 5.6 | 6.4 | 20.5 | 989.3 | 42 | 56 | 53 | - | 11.4 | 5516 | 1.2 | 21 | |
| 30. | 14.2 | 6.7 | 5.0 | 22.7 | 987.2 | 38 | 54 | 87 | - | 11.2 | 5546 | 1.6 | 21 | |
| 31. | 14.9 | 7.3 | 8.4 | 22.4 | 980.5 | 39 | 50 | 90 | - | 7.2 | 4601 | 1.5 | 29 | |

| | | | | | | | | | | | | | | |
|---------------|-----|--|-----|------|-------|----|----|----|------|-------|------|-----|--|--|
| Mittel | 9.7 | | 4.9 | 15.3 | 980.4 | 56 | 65 | 69 | | | 3446 | 2.3 | | |
| Summe | | | | | | | | | 38.9 | 179.4 | | | | |
| Norm | 5.6 | | 1.7 | 10.4 | 978.4 | | 74 | 70 | 52 | 117 | | 2.9 | | |

| | | | | | | | | | | | | | | | | | | | |
|--|------|---|-------|-----|---|--------------------------------------|------|-------|---------------|------------------|-----|----------|------|------------------------------|-------|----|----|-----|---|
| Luftdruck auf Meeresniveau: 1018.5 hPa | | Minimum : 955.5 hPa am 4. um 12:45 h | | | | Maximum: 994.4 hPa am 14. um 12:45 h | | | | | | | | | | | | | |
| Temperaturmittel 06:45 h : 5.8 °C | | 12:45 h 13.2 °C | | | | 18:45 h 12.3 C | | | | | | | | | | | | | |
| Spezialtage | Hell | trüb | Frost | Eis | Niederschlag (mm oder l/m ²) | | | Nebel | ohne Sonne | Windmax (m/s) | | Gewitter | Reif | Tage mit Schnee- decke | | | | | |
| | | | | | ≥0.1 | ≥0.3 | ≥1.0 | | | ≥15 | ≥26 | nahe | Alle | Fall | decke | | | | |
| Anzahl Tage | 2 | 15 | 0 | 0 | 9 | 9 | 7 | 1 | 4 | 6 | 0 | 0 | 0 | 8 | 0 | | | | |
| Norm | 4 | 16 | 10 | 0 | 15 | 14 | 11 | 2 | 6 | 4 | - | 0.2 | 0.8 | 7 | 4 | | | | |
| Windmaximu: 21.5 m/s am 6. um 01:10 h aus W | | Relative Feuchte (Formel SMA): 68% | | | | | | | | | | | | | | | | | |
| Windrichtungs- häufigkeiten (Termine): | | N | 7 | NE | 3 | E | 15 | SE | 9 | S | 2 | SW | 4 | W | 22 | NW | 25 | CAL | 6 |

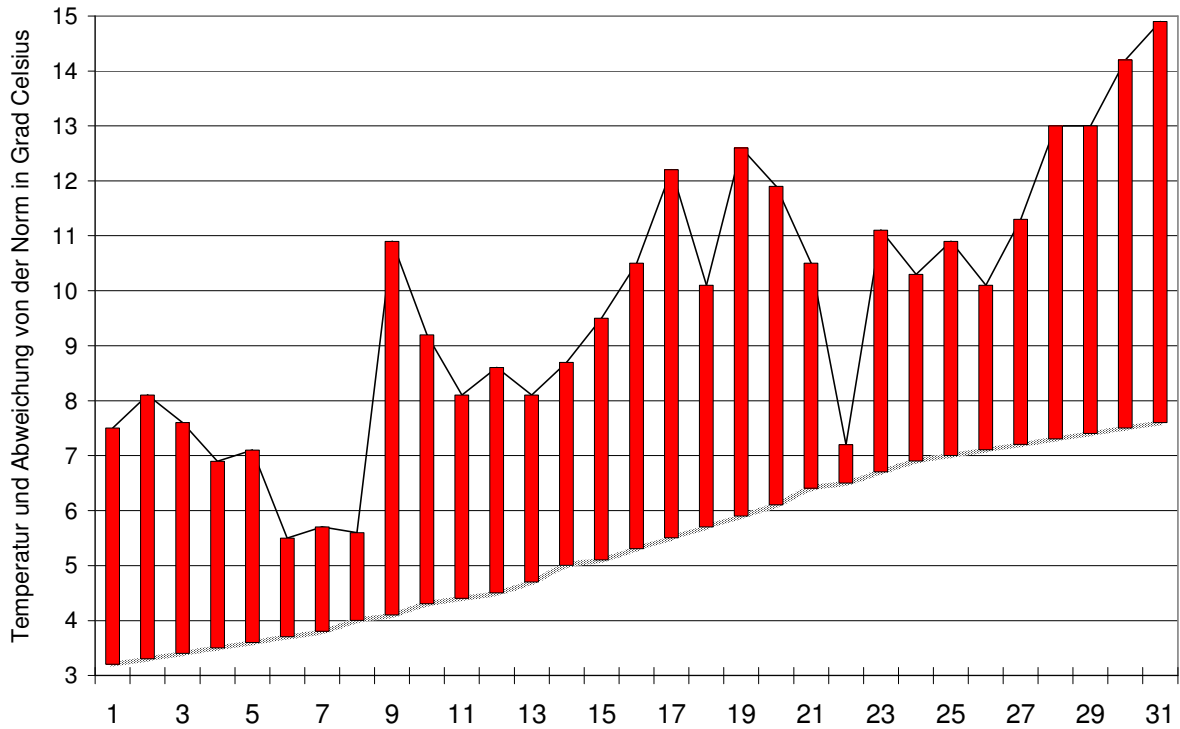
| | | | | |
|---|--------------------|-----------------|-----------------|-----------------|
| Gradtagzahlen 10°C / 18°C: 156.6 | 12°C / 20°C: 279.0 | Heiztage | 10°C / 18°C: 15 | 12°C / 20°C: 25 |
|---|--------------------|-----------------|-----------------|-----------------|

Der Verlauf der Temperaturen im Monat März 2017

Meteorologische Station Basel Binningen

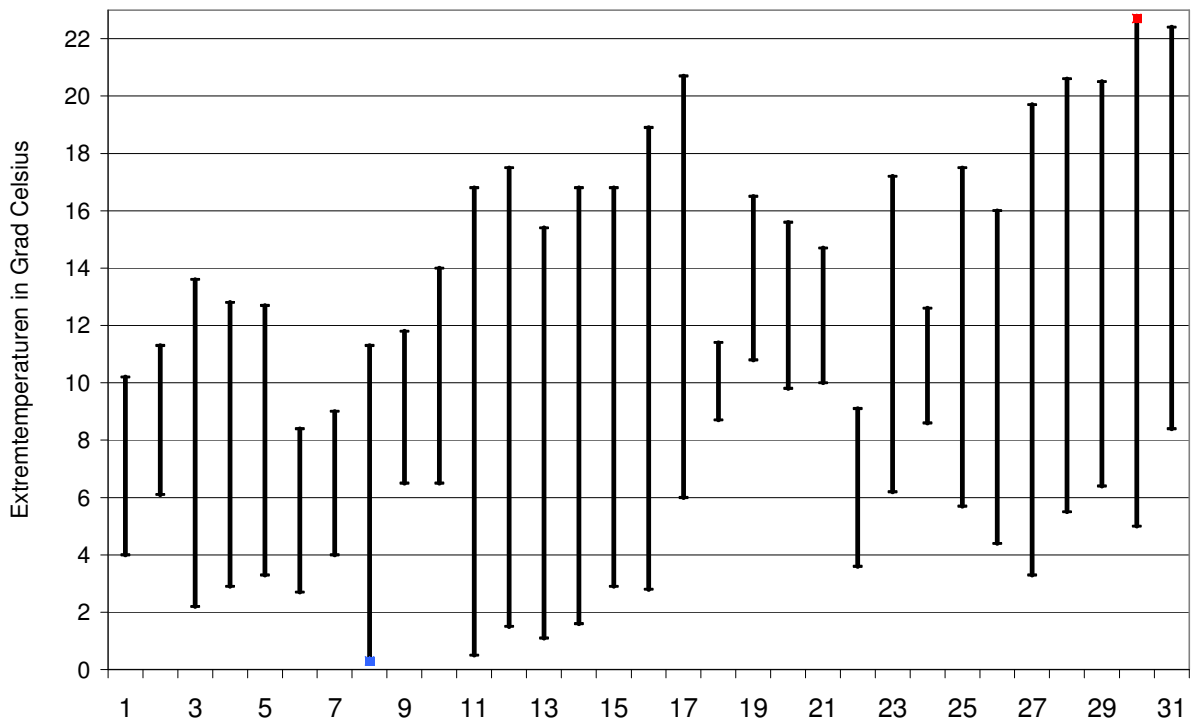
Tagesmittelwerte Temperatur und deren Abweichung von der Normperiode (1901-1990)

aufwärts gerichtete Balken = zu warm, abwärts gerichtete Balken = zu kalt



Tägliche Minima und Maxima der Temperatur

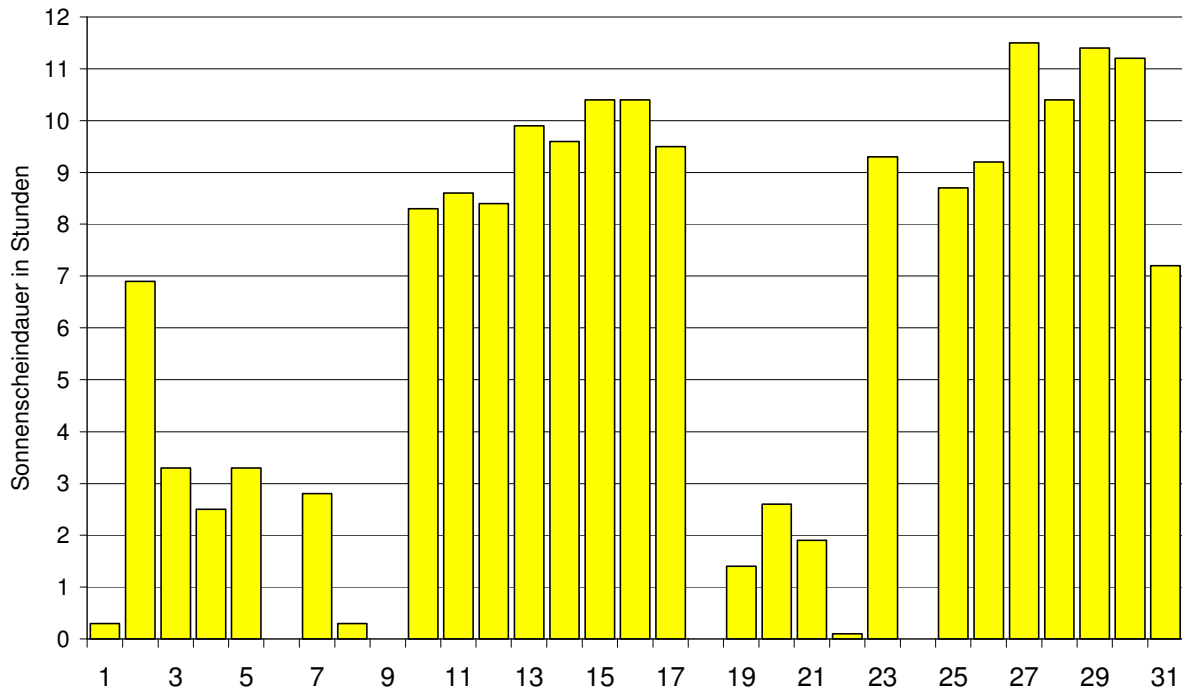
oberes Balkenende = Maximum, unteres Balkenende = Minimum



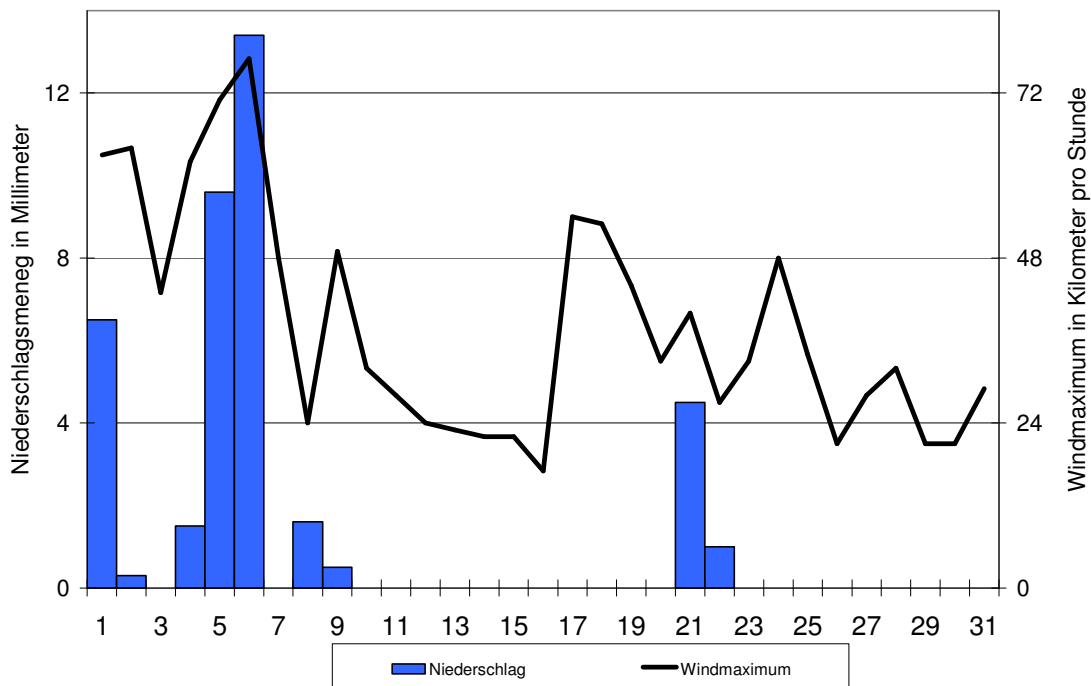
Der Verlauf von Sonnenscheindauer, Niederschlagsmenge und Windgeschwindigkeit im Monat März 2017

Meteorologische Station Basel Binningen

Tagessummen der Sonnenscheindauer

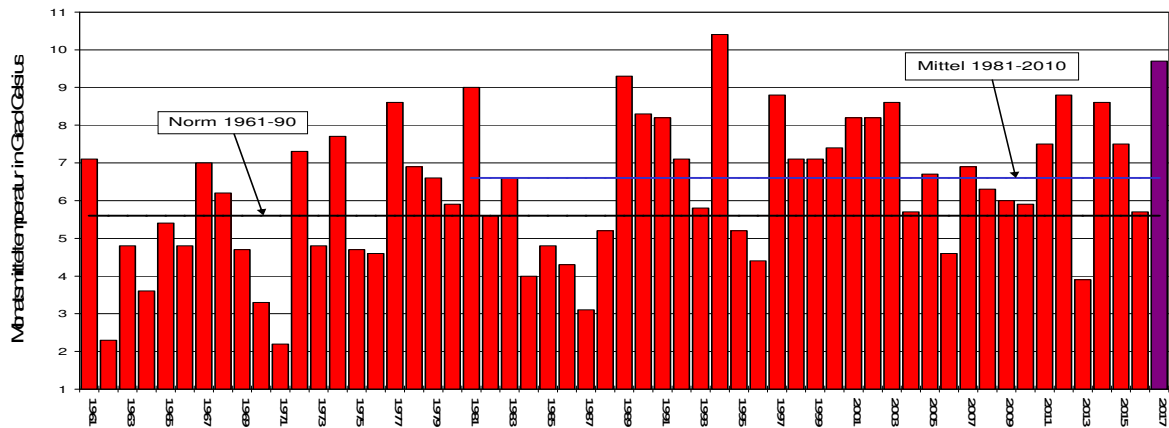


Tagessummen der Niederschlagsmenge (Balken) und maximale tägliche Windgeschwindigkeit (Linie)

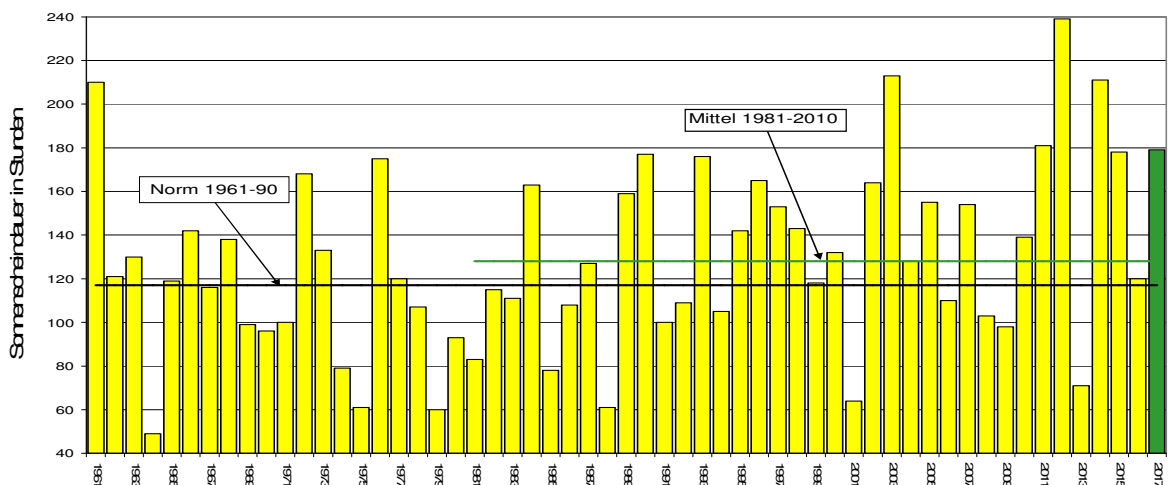


Die Entwicklung von Temperatur, Sonnenscheindauer und Niederschlagsmenge im Monat März seit 1961: Meteorologische Station Basel Binningen

Monatsmitteltemperaturen



Monatliche Sonnenscheindauer



Monatliche Niederschlagsmengen

