

# Meteorologische Beobachtungen: Monat Juni 2016

Meteorologische Station Basel-Binningen

317 m ü. M

47° 33' N / 7° 35' E

| Tag | Temperatur     |      |      |      | Luft-<br>druck<br>Mittel | Feuchte        |        | Bewöl-<br>kung<br>in % | Nieder-<br>schlag<br>in mm | Sonne<br>Std | Global-<br>strahl.<br>Wh/m <sup>2</sup> | Wind  |             |
|-----|----------------|------|------|------|--------------------------|----------------|--------|------------------------|----------------------------|--------------|---|-------|-------------|
|     | Mittel<br>24-h | Abw. | Min  | Max  |                          | rel %<br>12:45 | Mittel |                        |                            |              |   | m/sec | Max<br>Km/h |
| 1.  | 16.6           | 1.1  | 13.2 | 21.5 | 977.0                    | 58             | 68     | 90                     | 5.1                        | 3.0          | 5061                                    | 1.5   | 24          |
| 2.  | 16.0           | 0.4  | 13.8 | 19.5 | 974.2                    | 71             | 80     | 100                    | 3.9                        | 0.3          | 3250                                    | 1.3   | 22          |
| 3.  | 16.1           | 0.3  | 14.1 | 19.3 | 974.3                    | 73             | 80     | 93                     | 6.7                        | 0.7          | 3439                                    | 1.3   | 27          |
| 4.  | 16.7           | 0.8  | 14.3 | 20.8 | 976.0                    | 76             | 79     | 90                     | 4.0                        | 3.1          | 4988                                    | 1.4   | 25          |
| 5.  | 17.9           | 1.9  | 14.2 | 22.9 | 979.5                    | 61             | 75     | 90                     | 0.3                        | 3.1          | 5257                                    | 1.0   | 21 Fgew     |
| 6.  | 19.6           | 3.5  | 14.0 | 25.6 | 981.3                    | 60             | 70     | 63                     | -                          | 11.5         | 6690                                    | 1.2   | 23 Nebel    |
| 7.  | 18.9           | 2.8  | 15.4 | 25.0 | 983.2                    | 91             | 83     | 67                     | Δ 10.7                     | 4.8          | 4608                                    | 1.4   | 30 Gew      |
| 8.  | 17.8           | 1.6  | 16.4 | 23.2 | 981.7                    | 62             | 77     | 90                     | 21.5                       | 1.8          | 3571                                    | 1.4   | 37 Gew      |
| 9.  | 17.7           | 1.5  | 15.0 | 23.1 | 979.5                    | 62             | 68     | 50                     | 0.4                        | 8.2          | 6451                                    | 1.7   | 32          |
| 10. | 18.7           | 2.5  | 11.4 | 25.0 | 975.0                    | 46             | 56     | 37                     | 5.8                        | 11.1         | 7858                                    | 1.4   | 21          |
| 11. | 16.7           | 0.5  | 15.0 | 21.1 | 974.5                    | 61             | 76     | 87                     | 2.8                        | 1.5          | 3612                                    | 1.4   | 32 Gew      |
| 12. | 15.9           | -0.3 | 14.5 | 19.0 | 974.6                    | 72             | 77     | 90                     | 10.5                       | 0.3          | 2866                                    | 1.7   | 42          |
| 13. | 15.1           | -1.1 | 13.8 | 18.5 | 969.5                    | 80             | 88     | 97                     | 9.4                        | 0.2          | 3072                                    | 2.1   | 39          |
| 14. | 14.6           | -1.6 | 13.5 | 17.5 | 967.0                    | 73             | 80     | 93                     | 3.8                        | 0.4          | 3181                                    | 1.7   | 53          |
| 15. | 14.9           | -1.4 | 12.1 | 20.3 | 966.2                    | 75             | 76     | 90                     | 10.2                       | 3.4          | 4379                                    | 1.5   | 31 Fgew     |
| 16. | 13.9           | -2.5 | 12.7 | 17.2 | 966.8                    | 84             | 91     | 100                    | 28.9                       | 0.2          | 2322                                    | 1.5   | 30          |
| 17. | 14.2           | -2.3 | 11.4 | 19.0 | 974.4                    | 80             | 85     | 80                     | 4.2                        | 3.8          | 4069                                    | 1.6   | 59 Gew      |
| 18. | 14.9           | -1.8 | 12.2 | 18.9 | 981.6                    | 71             | 80     | 83                     | 4.1                        | 2.4          | 4256                                    | 1.5   | 28 Fgew     |
| 19. | 14.1           | -2.7 | 12.6 | 18.1 | 986.1                    | 78             | 85     | 87                     | 6.9                        | 0.6          | 3201                                    | 1.7   | 32          |
| 20. | 16.4           | -0.5 | 9.8  | 22.5 | 985.1                    | 54             | 69     | 93                     | 8.2                        | 8.8          | 7132                                    | 1.3   | 27          |
| 21. | 17.8           | 0.8  | 13.9 | 22.4 | 985.3                    | 75             | 81     | 93                     | -                          | 1.0          | 3330                                    | 1.2   | 22          |
| 22. | 23.4           | 6.3  | 17.2 | 29.7 | 985.1                    | 55             | 67     | 33                     | -                          | 13.4         | 8287                                    | 1.6   | 19          |
| 23. | 26.0           | 8.8  | 17.8 | 34.0 | 982.0                    | 55             | 62     | 7                      | -                          | 14.7         | 8278                                    | 1.1   | 15          |
| 24. | 26.3           | 9.0  | 20.7 | 31.8 | 979.6                    | 44             | 57     | 13                     | 18.0                       | 13.8         | 8055                                    | 1.9   | 40 Fgew     |
| 25. | 18.9           | 1.5  | 17.1 | 23.7 | 978.8                    | 91             | 90     | 87                     | 10.3                       | 1.7          | 3150                                    | 2.0   | 40 Gew      |
| 26. | 17.5           | 0.1  | 11.9 | 22.5 | 982.0                    | 51             | 62     | 60                     | -                          | 6.9          | 6077                                    | 1.7   | 26          |
| 27. | 18.2           | 0.7  | 12.0 | 23.7 | 984.1                    | 48             | 60     | 60                     | -                          | 12.2         | 7515                                    | 1.7   | 32          |
| 28. | 20.4           | 2.8  | 14.5 | 26.0 | 980.7                    | 53             | 58     | 47                     | -                          | 9.0          | 6853                                    | 1.4   | 20          |
| 29. | 21.2           | 3.5  | 17.6 | 25.8 | 978.0                    | 60             | 62     | 63                     | 1.1                        | 7.3          | 5461                                    | 1.6   | 19 Fgew     |
| 30. | 20.0           | 2.2  | 17.4 | 24.3 | 979.1                    | 67             | 69     | 83                     | 0.3                        | 2.2          | 3495                                    | 1.3   | 29          |

|               |      |  |      |      |       |    |    |    |       |       |      |     |  |
|---------------|------|--|------|------|-------|----|----|----|-------|-------|------|-----|--|
| <b>Mittel</b> | 17.9 |  | 14.3 | 22.7 | 978.1 | 66 | 74 | 74 |       |       | 4992 | 1.5 |  |
| <b>Summe</b>  |      |  |      |      |       |    |    |    | 177.1 | 151.4 |      |     |  |
| <b>Norm</b>   | 16.6 |  | 11.4 | 22.5 | 979.6 |    | 73 | 65 | 87    | 206   |      | 2.2 |  |

|  |      |                                     |             |       |   |                                      |      |       |               |                  |     |          |      |            |                 |    |    |     |   |
|--|------|-------------------------------------|-------------|-------|---|--------------------------------------|------|-------|---------------|------------------|-----|----------|------|------------|-----------------|----|----|-----|---|
| <b>Luftdruck</b> auf Meeresniveau: 1014.9 hPa        |      | Minimum : 966.2 hPa am 15. um 12:45 |             |       |   | Maximum: 987.2 hPa am 20. um 06:45 h |      |       |               |                  |     |          |      |            |                 |    |    |     |   |
| <b>Temperaturmittel</b> 06:45 h : 15.8 °C            |      | 12:45 h 20.4 °C                     |             |       |   | 18:45 h 20.5 °C                      |      |       |               |                  |     |          |      |            |                 |    |    |     |   |
| <b>Spezialtage</b>                                   | Hell | trüb                                | Som-<br>mer | Hitze | Niederschlag<br>(mm oder l/m <sup>2</sup> ) |                                      |      | Nebel | ohne<br>Sonne | Windmax<br>(m/s) |     | Gewitter | Reif | Ha-<br>gel | schwüle<br>Tage |    |    |     |   |
|  |      |                                     |             |       | ≥0.1  | ≥0.3                                 | ≥1.0 |       |               | ≥15              | ≥26 | Nahe     | Alle |            |                 |    |    |     |   |
| Anzahl Tage  | 2    | 18                                  | 8           | 2     | 23  | 23                                   | 20   | 1     | 0             | 1                | 0   | 5        | 10   | 0          | 1               | 7  |    |     |   |
| Norm   | 3    | 11                                  | 9           | 1     | 15  | 13                                   | 11   | 0.4   | 2             | 2                | -   | 3        | 8    | 0          | 0.4             | 4  |    |     |   |
| <b>Windmaximum:</b> 16.3 m/s am 17. um 11:20 h aus W |      |                                     |             |       | <b>Relative Feuchte</b> (Formel SMA): 77    |                                      |      |       |               |                  |     |          |      |            |                 |    |    |     |   |
| <b>Windrichtungs-<br/>häufigkeiten</b> (Termine):    |      | N                                   | 3           | NE    | 1   | E                                    | 11   | SE    | 9             | S                | 6   | SW       | 7    | W          | 21              | NW | 23 | CAL | 9 |

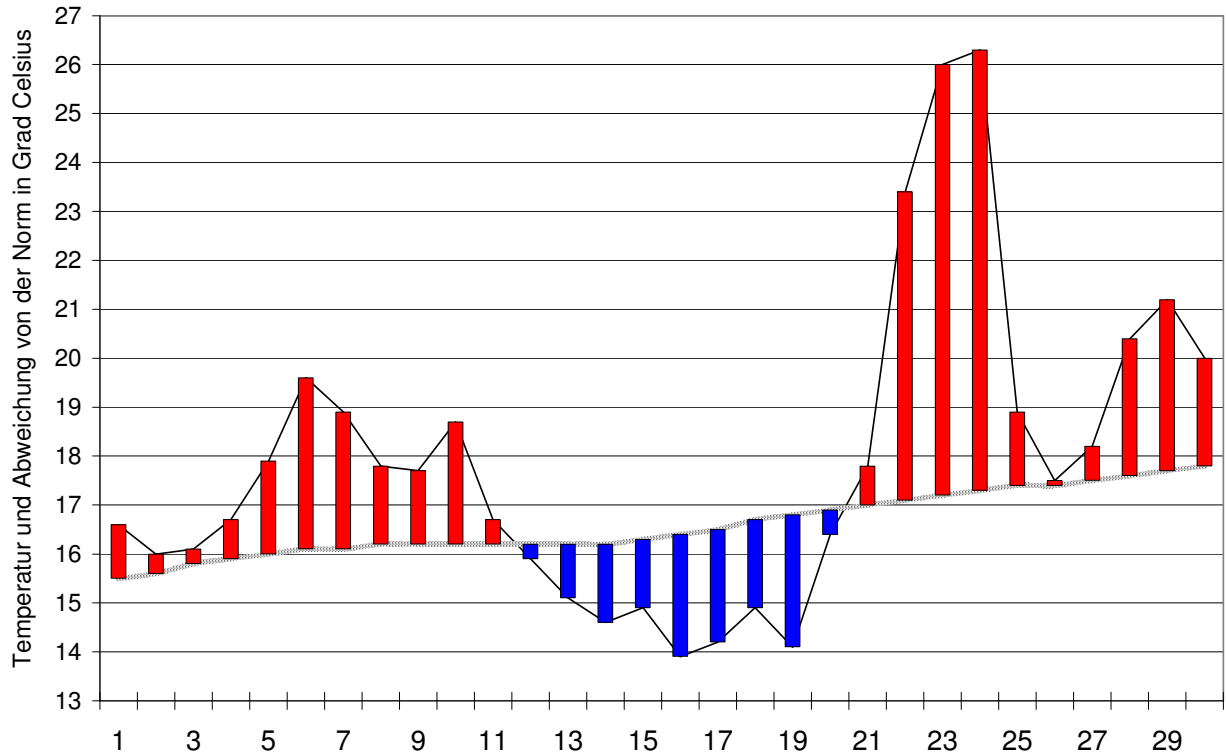
|                                   |   |              |   |                 |              |   |              |   |
|-----------------------------------|---|--------------|---|-----------------|--------------|---|--------------|---|
| <b>Gradtagzahlen</b> 10°C / 18°C: | 0 | 12°C / 20°C: | 0 | <b>Heiztage</b> | 10°C / 18°C: | 0 | 12°C / 20°C: | 0 |
|-----------------------------------|---|--------------|---|-----------------|--------------|---|--------------|---|

# Der Verlauf der Temperaturen im Monat Juni 2016

## Meteorologische Station Basel Binningen

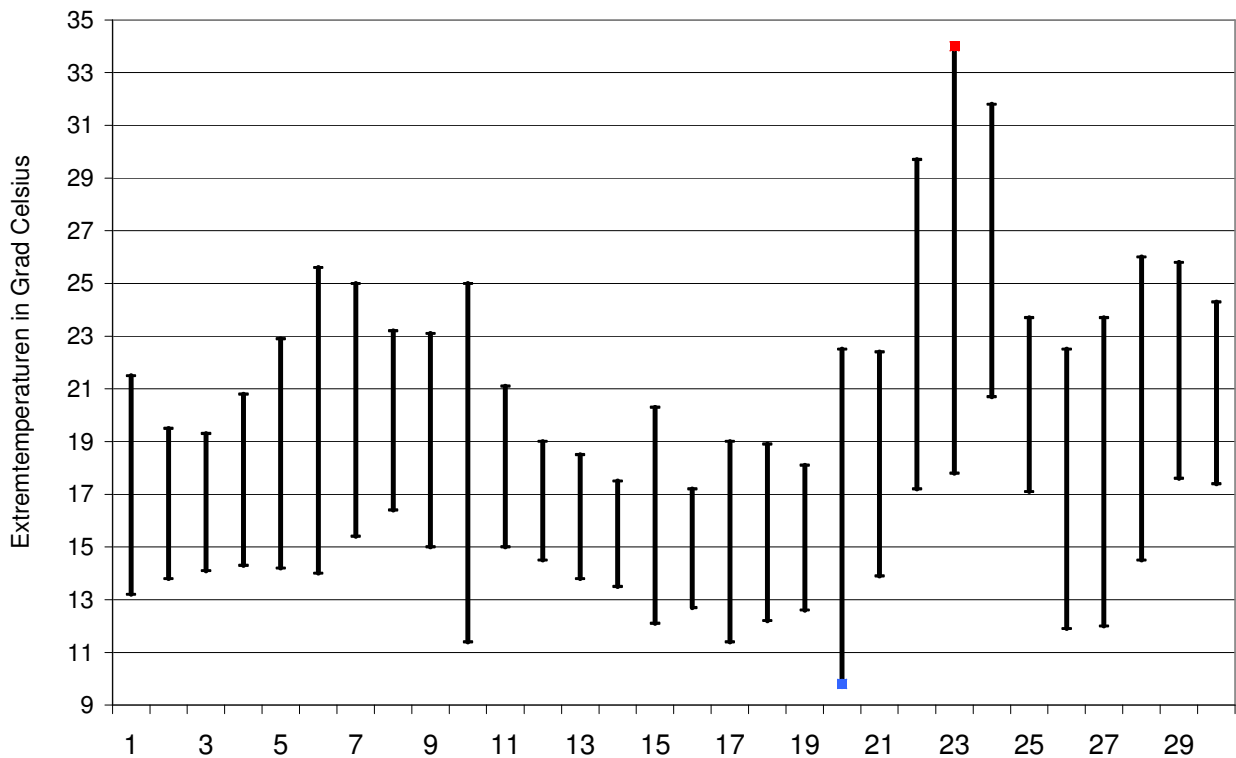
### Tagesmittelwerte Temperatur und deren Abweichung von der Normperiode (1901-1990)

aufwärts gerichtete Balken = zu warm, abwärts gerichtete Balken = zu kalt



### Tägliche Minima und Maxima der Temperatur

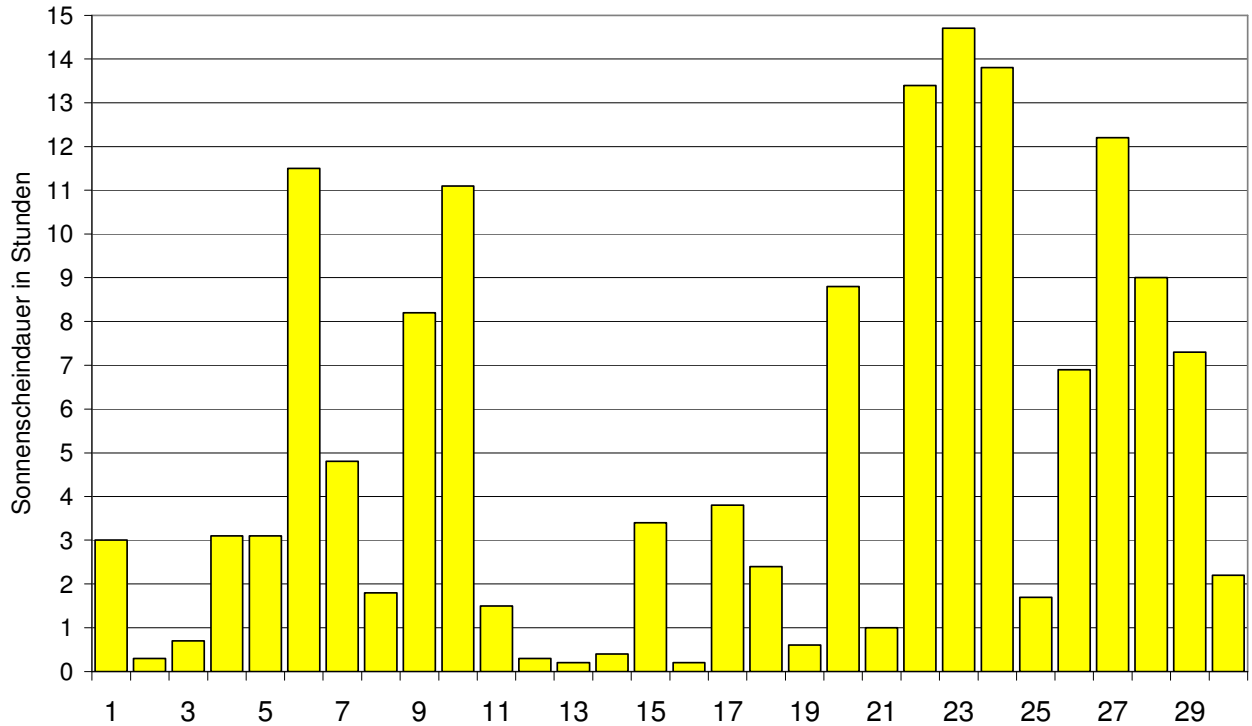
oberes Balkenende = Maximum, unteres Balkenende = Minimum



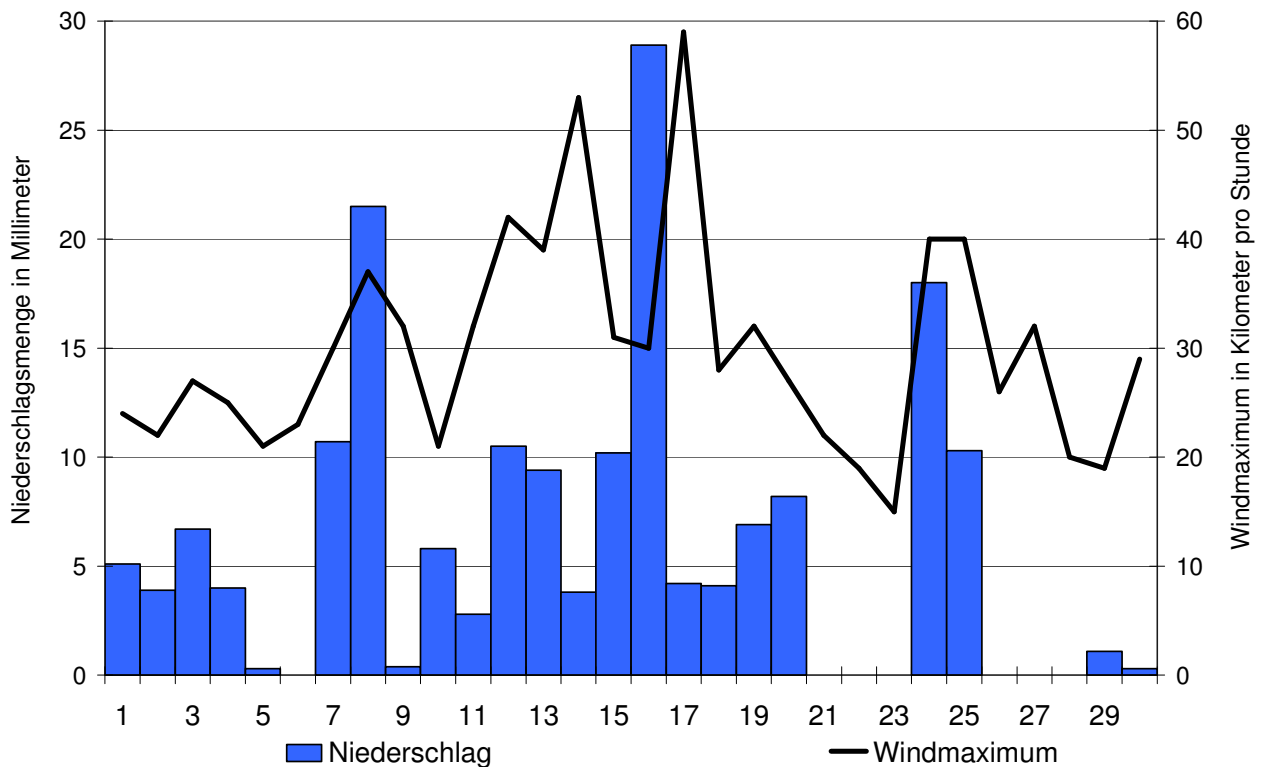
# Der Verlauf von Sonnenscheindauer, Niederschlagsmenge und Windgeschwindigkeit im Monat Juni 2016

## Meteorologische Station Basel Binningen

Tagessummen der Sonnenscheindauer

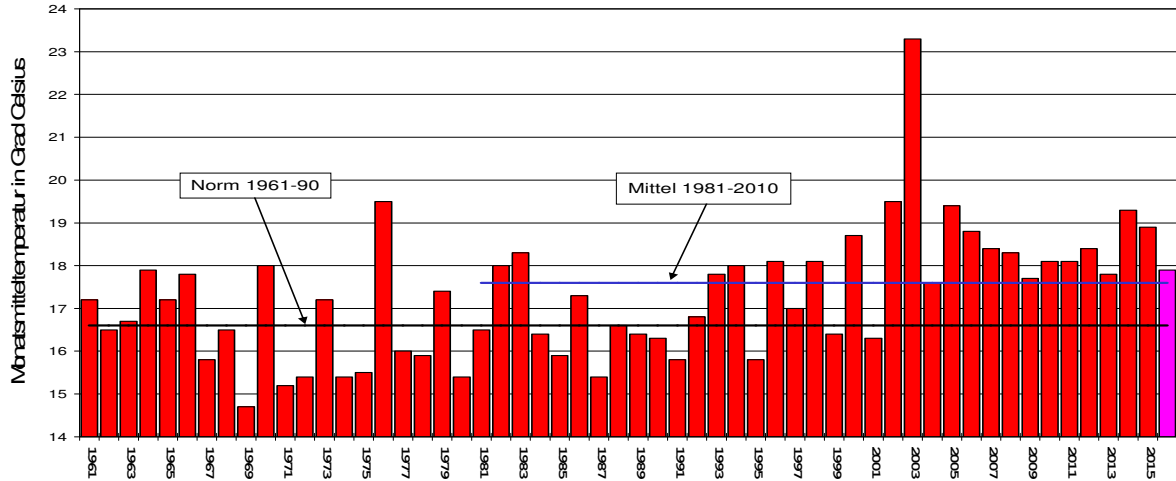


Tagessummen der Niederschlagsmenge (Balken) und maximale tägliche Windgeschwindigkeit (Linie)

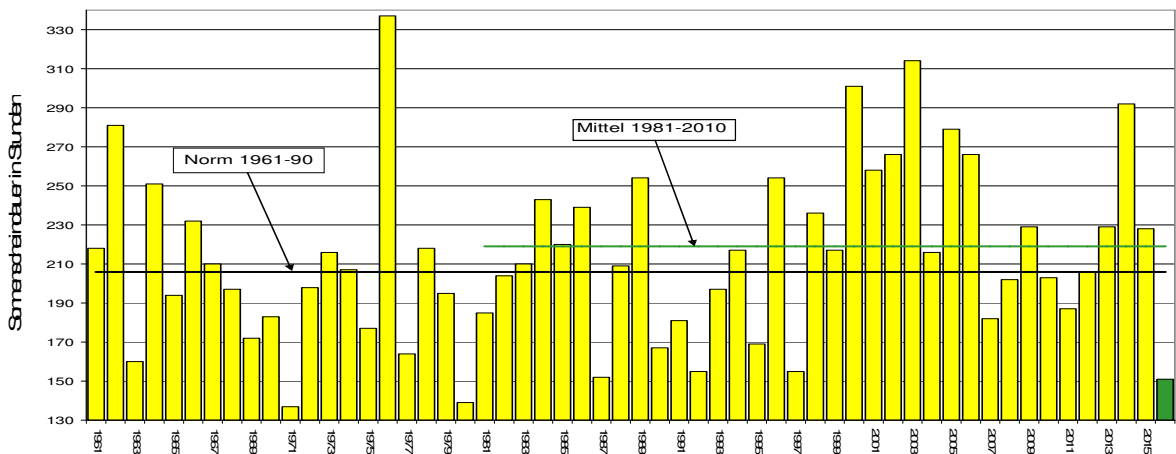


# Die Entwicklung von Temperatur, Sonnenscheindauer und Niederschlagsmenge im Monat Juni seit 1961: Meteorologische Station Basel Binningen

## Monatsmitteltemperaturen



## Monatliche Sonnenscheindauer



## Monatliche Niederschlagsmengen

