

Meteorologische Beobachtungen: Monat August 2005

Meteorologische Station Basel-Binningen

317 m ü. M

47° 33' N / 7° 35' E

| Tag | Temperatur | | | | Luft- druck Mittel | Feuchte | | Bewöl- kung in % | Nieder- schlag in mm | Sonne Std | Global- strahl. Wh/m ² | Wind | | |
|---------------|----------------|------|------|------|--------------------------|----------------|--------|------------------------|----------------------------|--------------|---|--------|-------|-------|
| | Mittel 24-h | Abw. | Min | Max | | rel % 12:45 | Mittel | | | | | Mittel | m/sec | |
| 1. | 19.3 | 0.4 | 13.5 | 25.5 | 980.0 | 51 | 63 | 60 | 2.1 | 9.6 | 5932 | 1.3 | 22 | |
| 2. | 15.1 | -3.8 | 15.3 | 16.5 | 980.6 | 91 | 93 | 100 | 18.5 | - | 655 | 1.8 | 32 | |
| 3. | 17.5 | -1.3 | 14.4 | 23.0 | 984.4 | 70 | 73 | 93 | 0.9 | 3.0 | 2635 | 1.3 | 40 | |
| 4. | 17.7 | -1.1 | 12.5 | 23.1 | 987.5 | 46 | 59 | 10 | - | 12.4 | 6952 | 1.7 | 31 | |
| 5. | 18.3 | -0.3 | 11.0 | 25.3 | 984.9 | 48 | 59 | 37 | 1.4 | 10.1 | 6853 | 1.3 | 36 | |
| 6. | 18.2 | -0.4 | 15.7 | 22.0 | 981.6 | 56 | 66 | 77 | - | 2.5 | 3709 | 1.7 | 34 | |
| 7. | 15.0 | -3.5 | 13.9 | 18.8 | 978.8 | 53 | 66 | 57 | 0.1 | 4.7 | 5000 | 2.2 | 36 | Fgew |
| 8. | 14.1 | -4.4 | 9.0 | 19.8 | 980.6 | 48 | 64 | 30 | - | 9.5 | 5931 | 1.4 | 25 | |
| 9. | 15.9 | -2.5 | 8.4 | 23.6 | 978.8 | 41 | 54 | 0 | - | 13.9 | 7134 | 0.9 | 20 | |
| 10. | 17.4 | -1.0 | 10.1 | 24.6 | 977.4 | 38 | 59 | 10 | - | 13.0 | 7139 | 1.3 | 27 | |
| 11. | 16.7 | -1.6 | 10.9 | 23.4 | 978.2 | 42 | 61 | 53 | - | 12.1 | 6511 | 1.5 | 38 | |
| 12. | 18.6 | 0.3 | 10.9 | 26.6 | 978.7 | 46 | 61 | 37 | 3.3 | 10.6 | 6104 | 1.4 | 41 | |
| 13. | 17.8 | -0.4 | 13.2 | 23.7 | 981.9 | 50 | 65 | 73 | - | 7.2 | 4474 | 1.1 | 24 | Nebel |
| 14. | 15.0 | -3.1 | 13.2 | 20.1 | 979.9 | 87 | 85 | 93 | 5.4 | 1.0 | 1857 | 2.4 | 53 | Fgew |
| 15. | 13.6 | -4.5 | 11.6 | 15.7 | 983.2 | 89 | 88 | 100 | 7.5 | - | 1145 | 1.5 | 36 | |
| 16. | 16.1 | -1.9 | 13.3 | 21.5 | 983.0 | 69 | 75 | 73 | - | 5.7 | 4163 | 2.7 | 35 | |
| 17. | 18.4 | 0.5 | 10.1 | 26.4 | 980.2 | 54 | 67 | 3 | - | 13.1 | 6504 | 3.2 | 41 | |
| 18. | 20.7 | 2.9 | 14.7 | 28.5 | 978.1 | 53 | 63 | 37 | - | 11.1 | 5160 | 2.1 | 35 | Fgew |
| 19. | 19.9 | 2.3 | 16.7 | 26.0 | 979.6 | 62 | 69 | 70 | 1.0 | 5.7 | 3946 | 1.2 | 47 | Fgew |
| 20. | 16.3 | -1.1 | 15.3 | 19.5 | 981.3 | 65 | 77 | 93 | 2.9 | 0.3 | 2550 | 1.3 | 24 | |
| 21. | 15.0 | -2.3 | 14.0 | 16.4 | 977.9 | 94 | 95 | 100 | 24.4 | - | 609 | 2.1 | 36 | Nebel |
| 22. | 17.0 | -0.2 | 15.8 | 19.7 | 976.3 | 90 | 88 | 100 | 2.5 | - | 907 | 2.7 | 43 | |
| 23. | 18.0 | 0.9 | 15.9 | 22.6 | 978.9 | 63 | 74 | 97 | - | 4.5 | 3984 | 1.9 | 35 | |
| 24. | 18.2 | 1.2 | 15.0 | 23.6 | 978.4 | 73 | 74 | 93 | - | 5.5 | 3968 | 1.0 | 21 | |
| 25. | 17.5 | 0.6 | 16.2 | 22.3 | 975.1 | 57 | 79 | 100 | 5.0 | 0.2 | 2236 | 2.1 | 21 | |
| 26. | 16.6 | -0.2 | 13.8 | 21.3 | 981.7 | 58 | 71 | 70 | - | 4.5 | 3807 | 1.4 | 43 | |
| 27. | 16.4 | -0.4 | 11.2 | 22.1 | 981.3 | 65 | 73 | 87 | - | 4.3 | 4504 | 1.3 | 28 | |
| 28. | 17.7 | 1.0 | 12.6 | 23.9 | 983.9 | 62 | 69 | 23 | - | 10.7 | 4816 | 1.4 | 21 | |
| 29. | 18.7 | 2.0 | 11.7 | 26.5 | 985.8 | 54 | 68 | 3 | - | 12.5 | 6047 | 1.2 | 25 | |
| 30. | 21.4 | 4.7 | 14.4 | 29.2 | 985.7 | 51 | 68 | 7 | - | 12.7 | 5894 | 1.6 | 18 | |
| 31. | 22.7 | 6.1 | 16.3 | 30.7 | 980.2 | 55 | 66 | 10 | - | 12.0 | 5689 | 1.4 | 22 | |
| Mittel | 17.4 | | 13.2 | 23.0 | 980.8 | 61 | 71 | 58 | | | 4413 | 1.7 | | |
| Summe | | | | | | | | | 75.0 | 212.4 | | | | |
| Norm | 18.1 | | 13.1 | 24.3 | 980.0 | | 74 | 59 | 88 | 215 | | 2.0 | | |

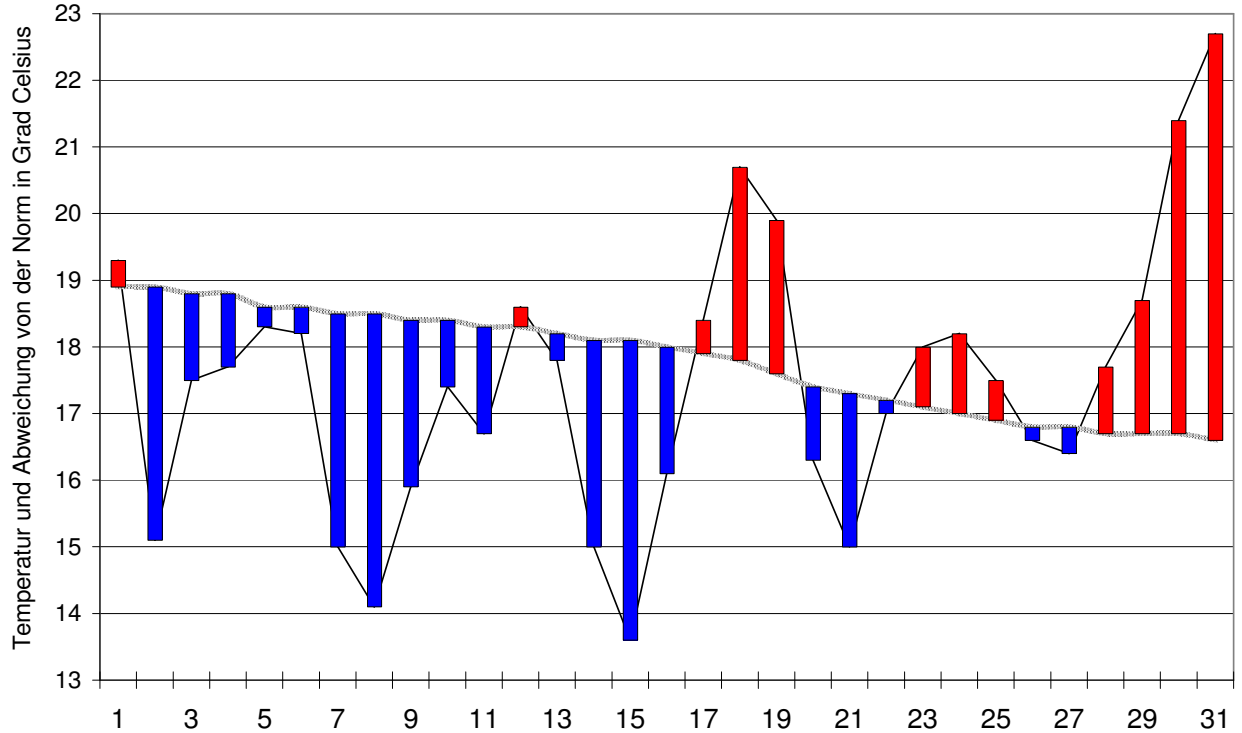
| | | | | | | | | | | | | | | | | | | | |
|---|---------------------------------------|------|-------------------------------------|-------|---|-------|---------------|------------------|----------|------|------------|-----------------|----|---|----|----|----|-----|---|
| Luftdruck auf Meeresniveau: 1017.8 hPa | Minimum : 973.4 hPa am 23. um 06:45 h | | Maximum: 988.0 hPa am 4. um 12:45 h | | | | | | | | | | | | | | | | |
| Temperaturmittel 06:45 h : 14.2°C | 12:45 h 20.9 °C | | 18:45 h 20.2°C | | | | | | | | | | | | | | | | |
| Spezialtage | Hell | trüb | Som- mer | Hitze | Niederschlag (mm oder l/m ²) | Nebel | ohne Sonne | Windmax (m/s) | Gewitter | Reif | Ha- gel | schwüle Tage | | | | | | | |
| | | | | | ≥0.1 | ≥0.3 | ≥1.0 | ≥15 | ≥26 | Nahe | Alle | | | | | | | | |
| Anzahl Tage | 7 | 11 | 9 | 1 | 13 | 12 | 11 | 2 | 4 | 0 | 0 | 3 | | | | | | | |
| Norm | 5 | 11 | 14 | 3 | 13 | 12 | 10 | 1 | 2 | 2 | - | 3 | | | | | | | |
| Windmaximu: | 14.8 m/s am 14 um 10:00 h aus WNW | | | | Relative Feuchte (Formel SMA): 73% | | | | | | | | | | | | | | |
| Windrichtungs- häufigkeiten (Termine): | | N | 8 | NE | 3 | E | 10 | SE | 5 | S | 3 | SW | 11 | W | 23 | NW | 23 | CAL | 6 |

| | | | | | | | | |
|-----------------------------------|---|--------------|---|-----------------|--------------|---|--------------|---|
| Gradtagzahlen 10°C / 18°C: | 0 | 12°C / 20°C: | 0 | Heiztage | 10°C / 18°C: | 0 | 12°C / 20°C: | 0 |
|-----------------------------------|---|--------------|---|-----------------|--------------|---|--------------|---|

Der Verlauf der Temperaturen im Monat August 2005

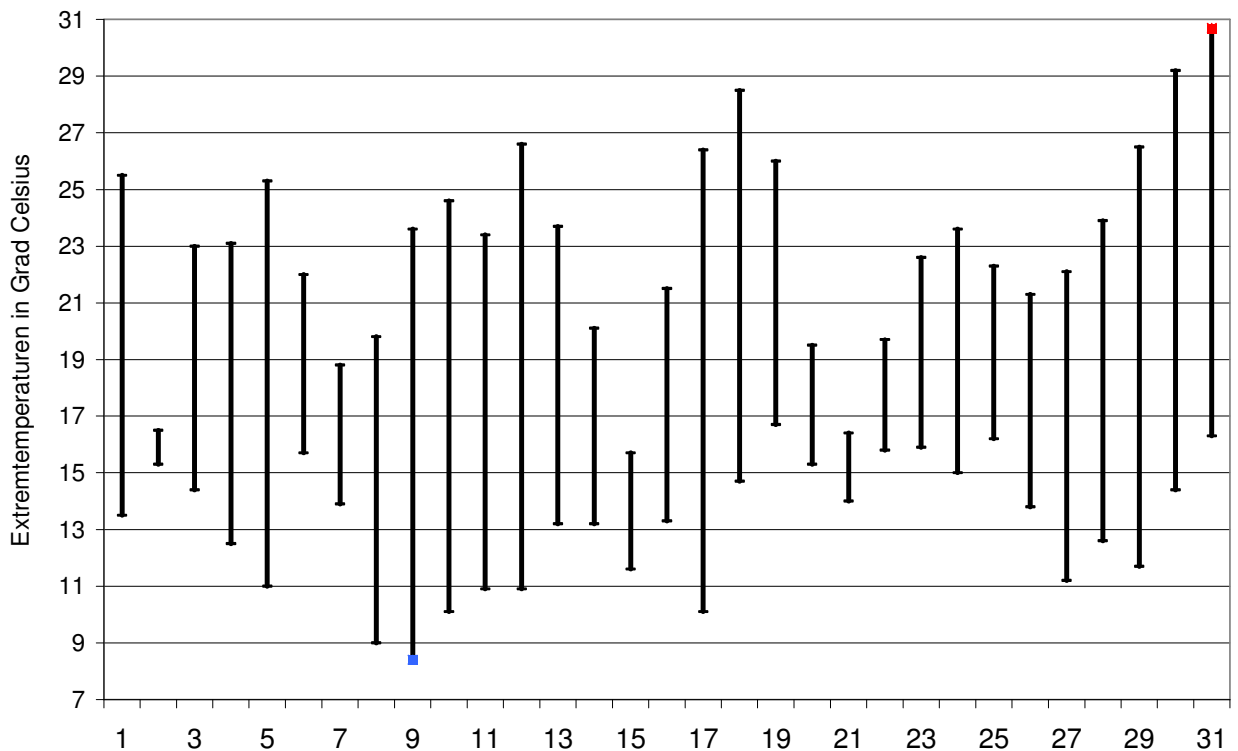
Meteorologische Station Basel Binningen

Tagesmittelwerte Temperatur und deren Abweichung von der Normperiode (1901-1990)
aufwärts gerichtete Balken = zu warm, abwärts gerichtete Balken = zu kalt



Tägliche Minima und Maxima der Temperatur

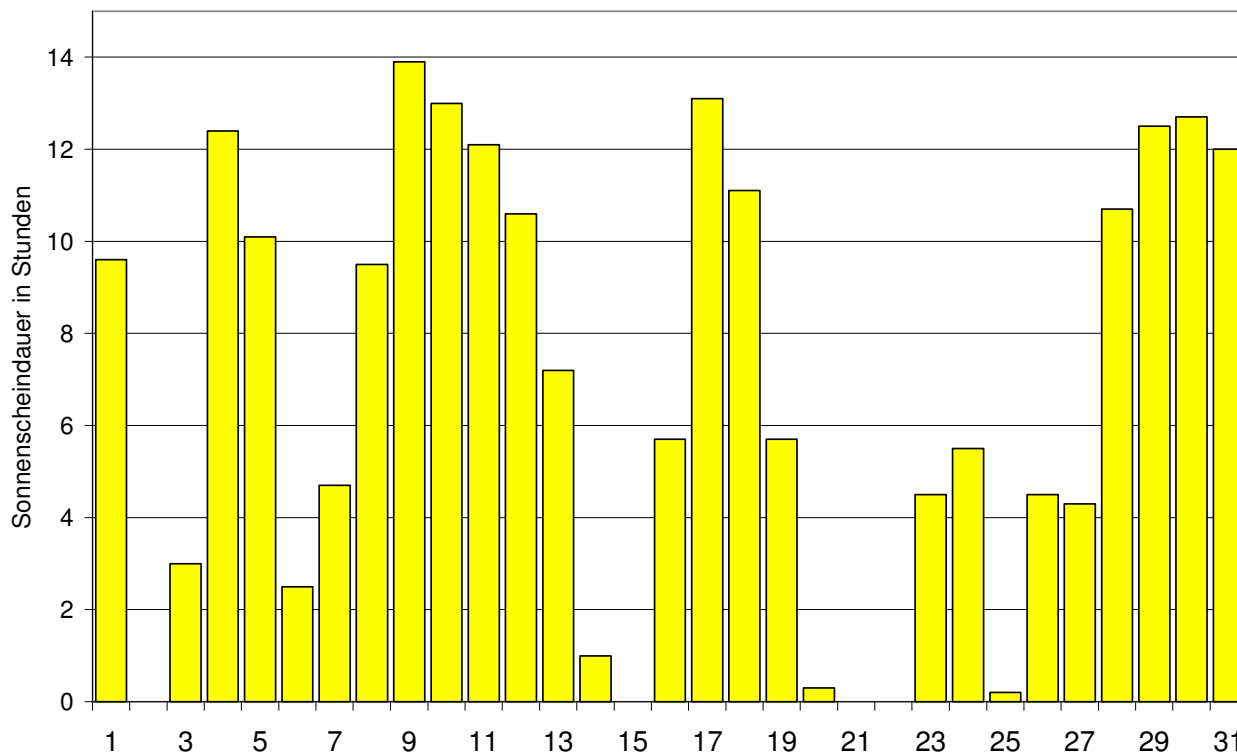
oberes Balkenende = Maximum, unteres Balkenende = Minimum



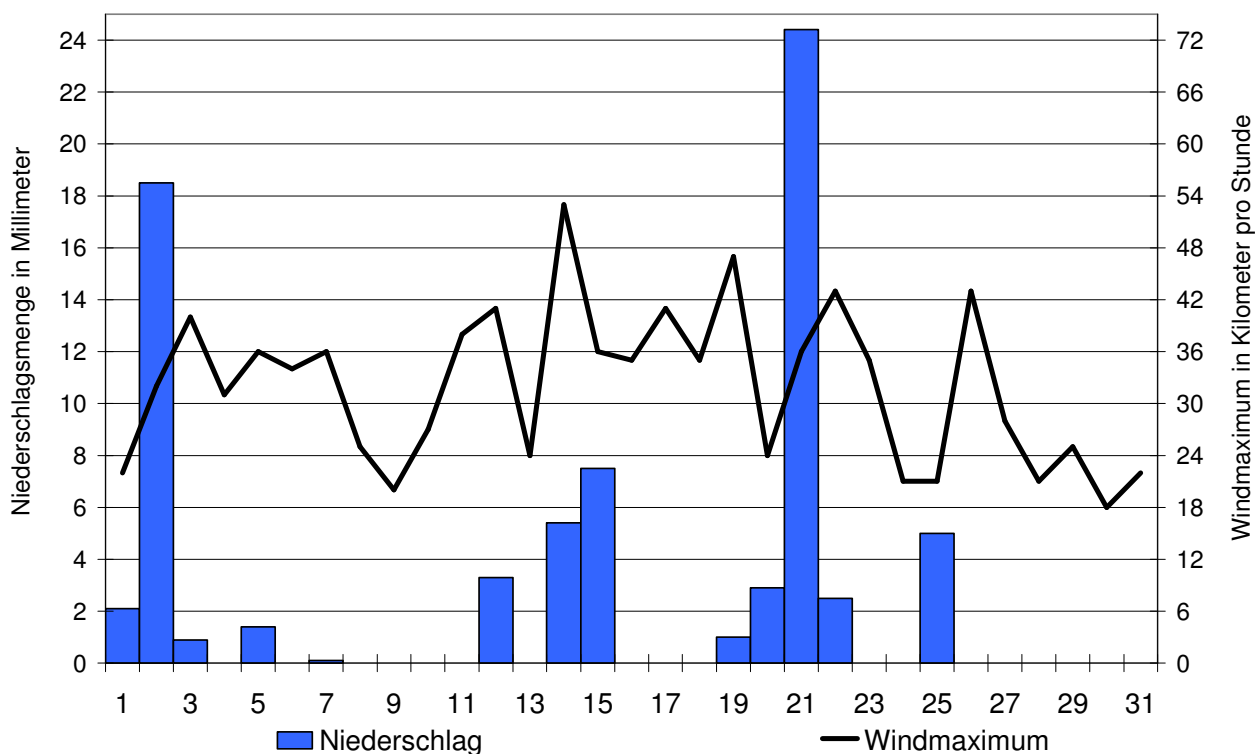
Der Verlauf von Sonnenscheindauer, Niederschlagsmenge und Windgeschwindigkeit im Monat August 2005

Meteorologische Station Basel Binningen

Tagessummen der Sonnenscheindauer

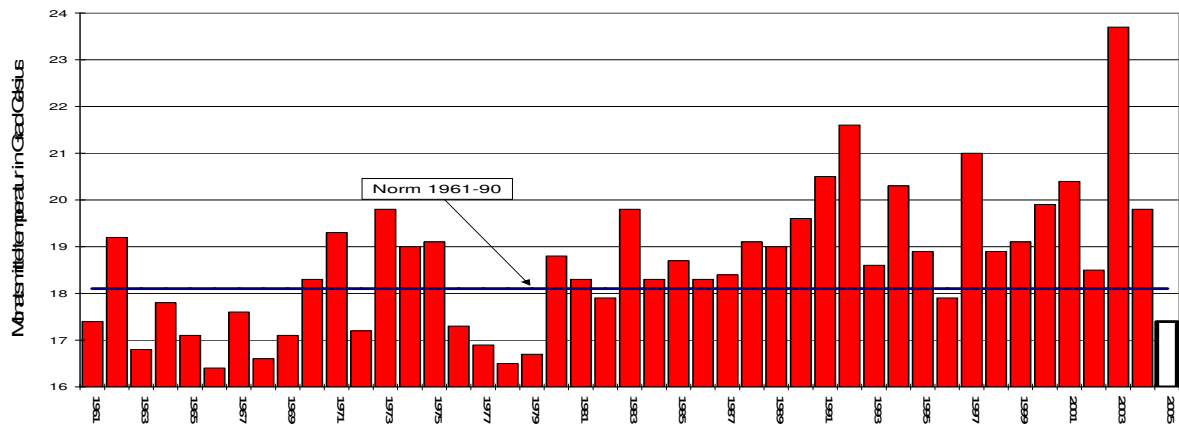


Tagessummen der Niederschlagsmenge (Balken) und maximale tägliche Windgeschwindigkeit (Linie)

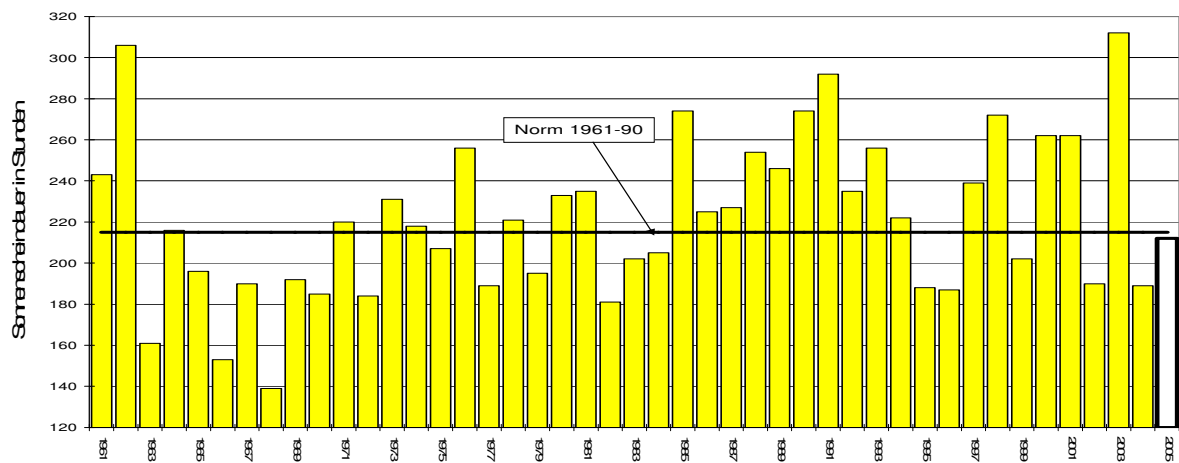


Die Entwicklung von Temperatur, Sonnenscheindauer und Niederschlagsmenge im Monat August seit 1961: Meteorologische Station Basel Binningen

Monatsmitteltemperaturen



Monatliche Sonnenscheindauer



Monatliche Niederschlagsmengen

