

# Meteorologische Beobachtungen: Monat April 2016

Meteorologische Station Basel-Binningen

317 m ü. M

47° 33' N / 7° 35' E

| Tag | Temperatur     |      |      |      | Luft-<br>druck<br>Mittel | Feuchte<br>rel %<br>12:45 Mittel | Bewöl-<br>kung<br>in % | Nieder-<br>schlag<br>in mm | Sonne<br>Std | Global-<br>strahl.<br>Wh/m <sup>2</sup> | Wind   |     | Schnee-<br>höhe<br>cm |      |
|-----|----------------|------|------|------|--------------------------|----------------------------------|------------------------|----------------------------|--------------|---|--------|-----|-----------------------|------|
|     | Mittel<br>24-h | Abw. | Min  | Max  |                          |                                  |                        |                            |              |   | Mittel | Max |                       | Km/h |
| 1.  | 8.8            | 1.2  | 8.1  | 11.6 | 978.6                    | 77                               | 83                     | 97                         | 0.0          | 0.1                                     | 1615   | 2.2 | 46                    |      |
| 2.  | 10.2           | 2.5  | 6.6  | 16.3 | 977.8                    | 70                               | 79                     | 100                        | 0.0          | 0.7                                     | 2969   | 1.3 | 24                    |      |
| 3.  | 13.8           | 6.0  | 8.9  | 18.5 | 974.3                    | 57                               | 71                     | 90                         | -            | 1.8                                     | 3342   | 1.5 | 21                    |      |
| 4.  | 13.6           | 5.8  | 10.0 | 19.0 | 970.9                    | 56                               | 67                     | 93                         | -            | 2.6                                     | 3308   | 1.4 | 27                    |      |
| 5.  | 11.5           | 3.6  | 10.0 | 14.8 | 972.3                    | 71                               | 86                     | 100                        | 14.6         | -                                       | 1791   | 1.3 | 22                    |      |
| 6.  | 11.8           | 3.8  | 8.9  | 17.0 | 977.1                    | 61                               | 68                     | 73                         | -            | 5.0                                     | 3507   | 1.7 | 28                    |      |
| 7.  | 8.8            | 0.8  | 7.5  | 11.0 | 975.9                    | 60                               | 63                     | 90                         | 0.0          | 0.1                                     | 2199   | 2.5 | 43                    |      |
| 8.  | 7.3            | -0.8 | 5.5  | 9.1  | 974.1                    | 59                               | 69                     | 97                         | 0.1          | -                                       | 1576   | 1.0 | 14                    |      |
| 9.  | 7.7            | -0.4 | 5.9  | 9.4  | 971.2                    | 61                               | 72                     | 97                         | -            | -                                       | 1269   | 1.1 | 14                    |      |
| 10. | 11.7           | 3.4  | 5.2  | 18.0 | 972.1                    | 42                               | 55                     | 70                         | -            | 12.5                                    | 6393   | 2.8 | 36                    |      |
| 11. | 12.5           | 4.0  | 6.1  | 20.4 | 972.9                    | 46                               | 61                     | 20                         | 5.0          | 10.0                                    | 5842   | 2.1 | 50                    | Fgew |
| 12. | 13.0           | 4.4  | 9.0  | 19.3 | 973.6                    | 52                               | 68                     | 77                         | 11.0         | 4.8                                     | 4191   | 2.1 | 54                    |      |
| 13. | 10.2           | 1.5  | 9.1  | 14.9 | 972.2                    | 84                               | 88                     | 97                         | 11.3         | 0.8                                     | 2101   | 2.0 | 45                    | Fgew |
| 14. | 11.8           | 2.9  | 8.0  | 16.5 | 975.3                    | 61                               | 68                     | 87                         | 1.0          | 5.3                                     | 4183   | 1.8 | 22                    |      |
| 15. | 10.5           | 1.6  | 9.2  | 14.8 | 971.9                    | 83                               | 83                     | 100                        | 13.2         | 0.1                                     | 1177   | 1.7 | 25                    |      |
| 16. | 12.8           | 3.7  | 10.2 | 18.3 | 968.7                    | 69                               | 81                     | 93                         | 30.9         | 3.2                                     | 3443   | 2.7 | 59                    | Gew  |
| 17. | 8.3            | -0.9 | 6.6  | 10.4 | 974.0                    | 82                               | 90                     | 93                         | 13.0         | -                                       | 1637   | 1.9 | 35                    |      |
| 18. | 6.2            | -3.2 | 5.0  | 7.8  | 983.5                    | 86                               | 87                     | 100                        | 5.9          | 0.1                                     | 1263   | 1.3 | 24                    |      |
| 19. | 8.8            | -0.7 | 2.4  | 15.8 | 987.8                    | 53                               | 66                     | 40                         | -            | 9.1                                     | 6108   | 1.3 | 22                    |      |
| 20. | 11.3           | 1.8  | 2.4  | 19.8 | 987.1                    | 49                               | 61                     | 30                         | -            | 12.3                                    | 6902   | 1.7 | 36                    |      |
| 21. | 13.6           | 4.1  | 4.1  | 21.6 | 983.1                    | 39                               | 54                     | 90                         | -            | 11.0                                    | 6340   | 1.6 | 18                    |      |
| 22. | 14.9           | 5.2  | 8.3  | 21.1 | 977.8                    | 55                               | 59                     | 90                         | 0.8          | 9.5                                     | 5895   | 1.7 | 33                    |      |
| 23. | 9.4            | -0.3 | 5.8  | 14.7 | 973.1                    | 83                               | 86                     | 97                         | 9.0          | -                                       | 1706   | 2.0 | 36                    |      |
| 24. | 5.5            | -4.3 | 2.5  | 9.5  | 976.9                    | 53                               | 69                     | 80                         | 0.6          | 5.2                                     | 4505   | 2.4 | 40                    |      |
| 25. | 5.5            | -4.4 | 2.1  | 8.6  | 976.3                    | 49                               | 62                     | 97                         | 0.1          | 0.9                                     | 3673   | 3.5 | 46                    |      |
| 26. | 5.9            | -4.1 | 3.6  | 9.8  | 969.3                    | 79                               | 83                     | 100                        | Δ 8.9        | 0.3                                     | 2063   | 3.9 | 54                    |      |
| 27. | 4.4            | -5.6 | 1.8  | 8.5  | 975.4                    | 61                               | 64                     | 67                         | * Δ 0.2      | 7.6                                     | 5059   | 3.0 | 55                    |      |
| 28. | 5.7            | -4.5 | -0.3 | 11.9 | 978.2                    | 56                               | 64                     | 43                         | 0.0          | 6.4                                     | 4658   | 1.6 | 34                    | Reif |
| 29. | 9.1            | -1.3 | 2.8  | 16.1 | 979.8                    | 44                               | 55                     | 50                         | -            | 11.8                                    | 6911   | 1.4 | 22                    |      |
| 30. | 9.2            | -1.4 | 2.8  | 17.1 | 977.8                    | 43                               | 72                     | 80                         | 21.0         | 6.4                                     | 4845   | 1.8 | 53                    |      |

|               |     |  |     |      |       |    |    |    |       |       |      |     |  |  |
|---------------|-----|--|-----|------|-------|----|----|----|-------|-------|------|-----|--|--|
| <b>Mittel</b> | 9.8 |  | 5.9 | 14.7 | 976.0 | 61 | 71 | 81 |       |       | 3682 | 1.9 |  |  |
| <b>Summe</b>  |     |  |     |      |       |    |    |    | 146.6 | 127.6 |      |     |  |  |
| <b>Norm</b>   | 9.2 |  | 4.4 | 14.6 | 976.6 |    | 70 | 70 | 64    | 149   |      | 2.5 |  |  |

|   |      |  |             |       |   |                                      |      |       |               |                  |     |          |      |      |                     |       |    |     |   |
|---|------|--|-------------|-------|---|--------------------------------------|------|-------|---------------|------------------|-----|----------|------|------|---------------------|-------|----|-----|---|
| <b>Luftdruck</b> auf Meeresniveau: 1013.9 hPa         |      | Minimum : 968.2 hPa am 16.um 18:45 h       |             |       |   | Maximum: 989.2 hPa am 30. um 06:45 h |      |       |               |                  |     |          |      |      |                     |       |    |     |   |
| <b>Temperaturmittel</b> 06:45 h : 7.3 °C              |      | 12:45 h 12.7 °C                            |             |       |   | 18:45 h 11.6°C                       |      |       |               |                  |     |          |      |      |                     |       |    |     |   |
| <b>Spezialtage</b>                                    | Hell | trüb                                       | Som-<br>mer | Frost | Niederschlag<br>(mm oder l/m <sup>2</sup> ) |                                      |      | Nebel | ohne<br>Sonne | Windmax<br>(m/s) |     | Gewitter |      | Reif | Tage mit<br>Schnee- |       |    |     |   |
|   |      |  |             |       | ≥0.1  | ≥0.3                                 | ≥1.0 |       |               | ≥15              | ≥26 | Nahe     | Alle |      | Fall                | Decke |    |     |   |
| Anzahl Tage   | 0    | 19   | 0           | 1     | 17  | 14                                   | 12   | 0     | 5             | 4                | 0   | 1        | 3    | 1    | 2                   | 0     |    |     |   |
| Norm  | 4    | 15   | 1           | 3     | 15  | 14                                   | 11   | 1     | 5             | 3                | -   | 0.6      | 1.8  | 5    | 3                   | 0.4   |    |     |   |
| <b>Windmaximu:</b> 16.3 m/s am 16. um 13:20 h aus WNW |      | <b>Relative Feuchte</b> (Formel SMA): 73 % |             |       |   |                                      |      |       |               |                  |     |          |      |      |                     |       |    |     |   |
| <b>Windrichtungs-<br/>häufigkeiten</b> (Termine):     |      | N  | 10          | NE    | 6   | E                                    | 14   | SE    | 10            | S                | 2   | SW       | 9    | W    | 10                  | NW    | 20 | CAL | 9 |

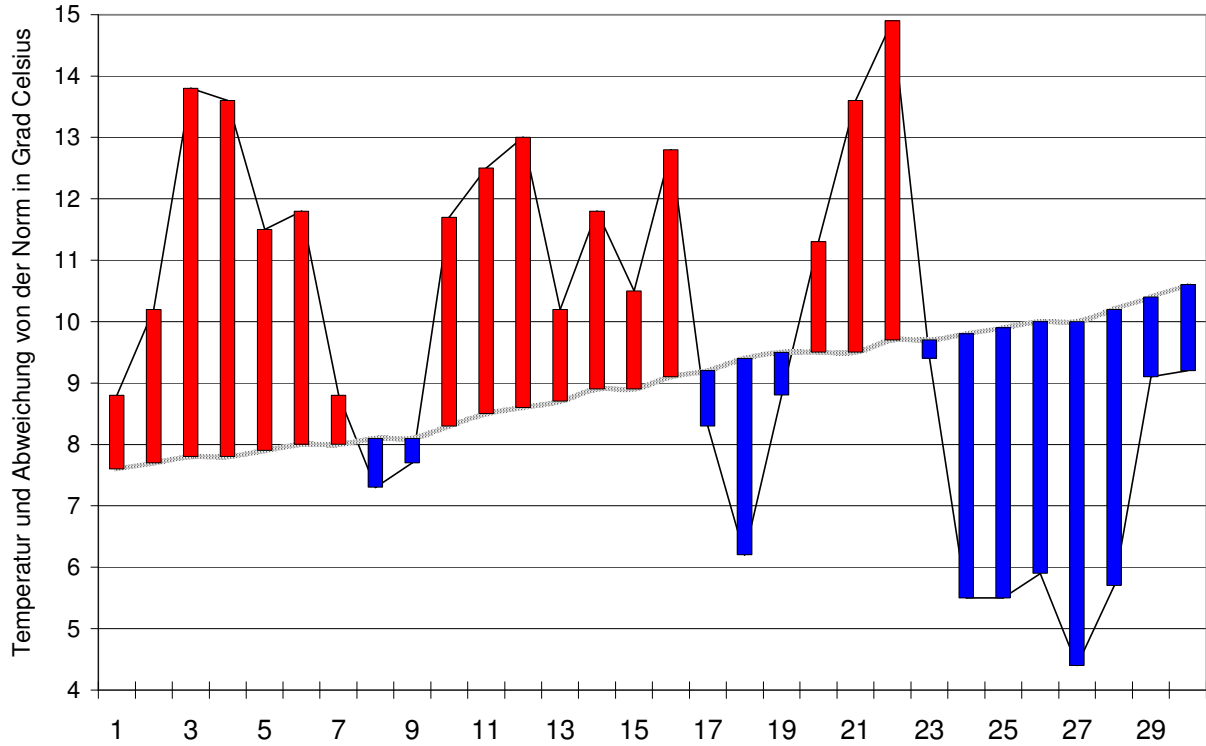
|   |                    |                 |                 |                 |
|---|--------------------|-----------------|-----------------|-----------------|
| <b>Gradtagzahlen</b> 10°C / 18°C: 159.4 | 12°C / 20°C: 260.4 | <b>Heiztage</b> | 10°C / 18°C: 15 | 12°C / 20°C: 23 |
|---|--------------------|-----------------|-----------------|-----------------|

# Der Verlauf der Temperaturen im Monat April 2016

## Meteorologische Station Basel Binningen

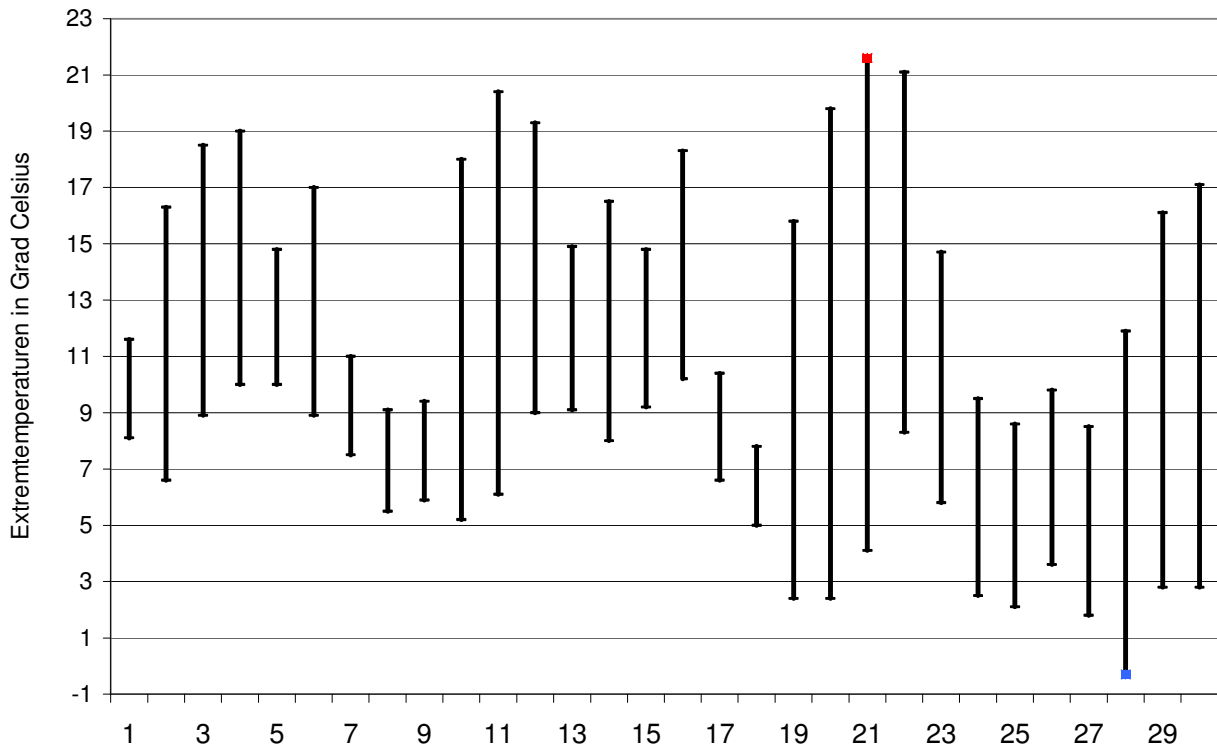
### Tagesmittelwerte Temperatur und deren Abweichung von der Normperiode (1901-1990)

aufwärts gerichtete Balken = zu warm, abwärts gerichtete Balken = zu kalt



### Tägliche Minima und Maxima der Temperatur

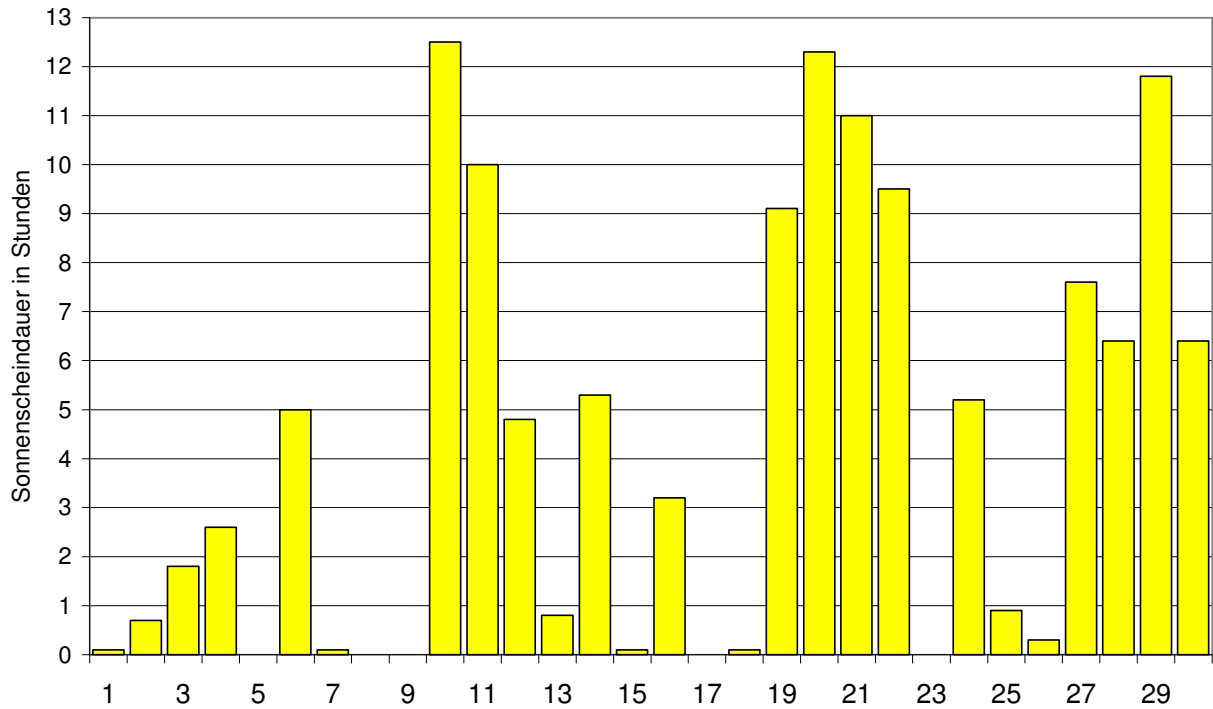
oberes Balkenende = Maximum, unteres Balkenende = Minimum



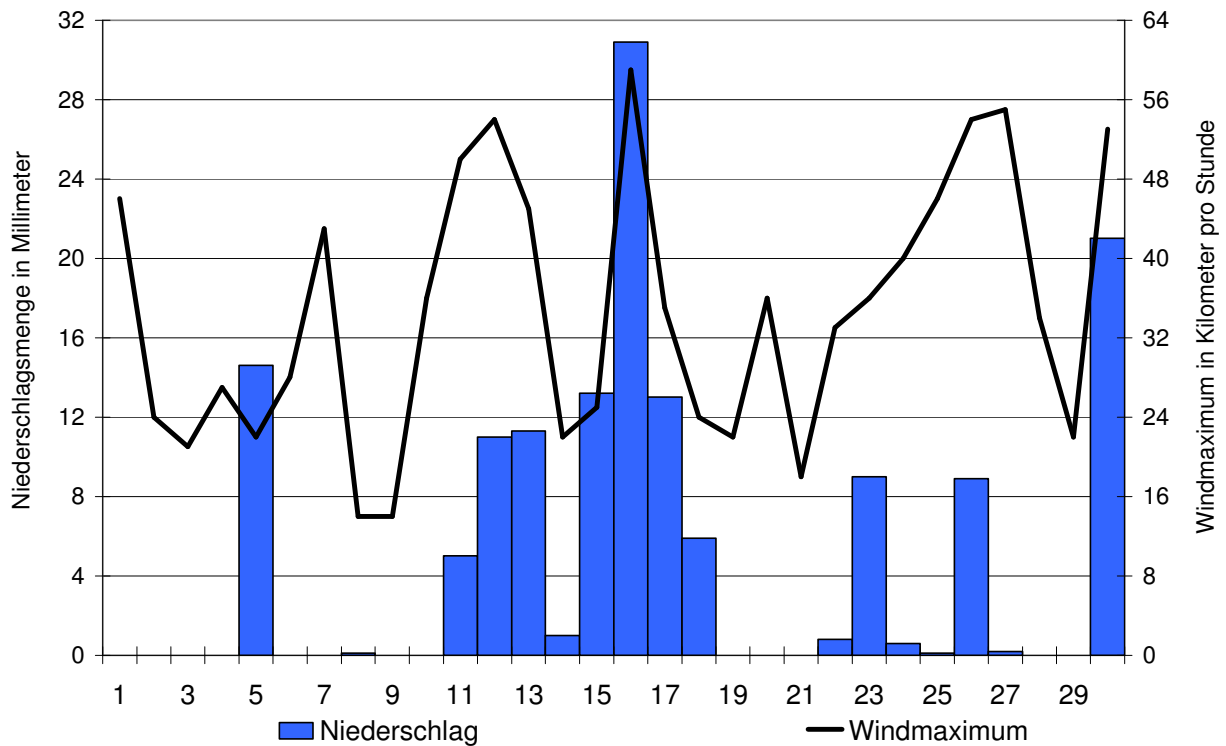
# Der Verlauf von Sonnenscheindauer, Niederschlagsmenge und Windgeschwindigkeit im Monat April 2016

## Meteorologische Station Basel Binningen

**Tagessummen der Sonnenscheindauer**

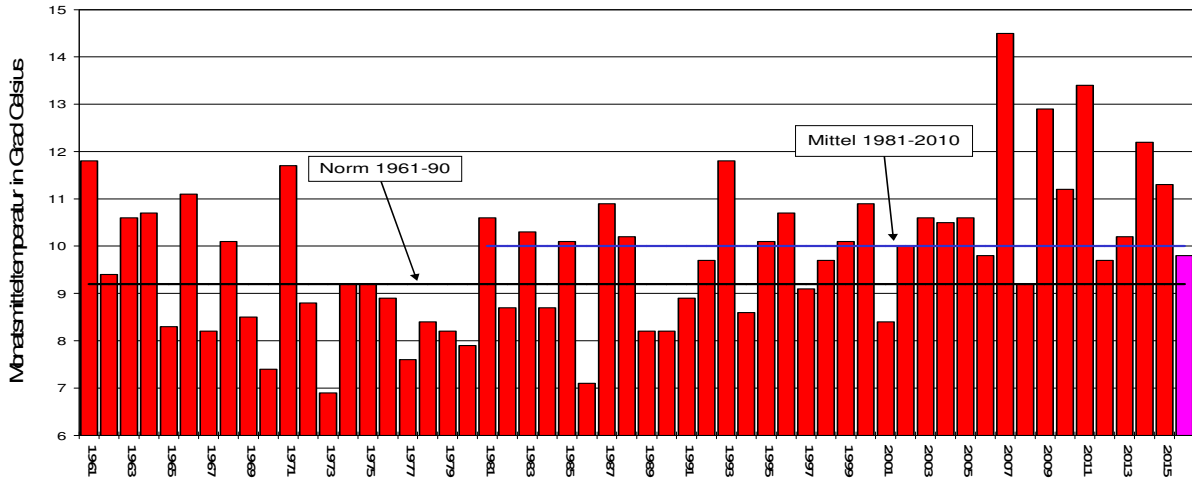


**Tagessummen der Niederschlagsmenge (Balken) und maximale tägliche Windgeschwindigkeit (Linie)**

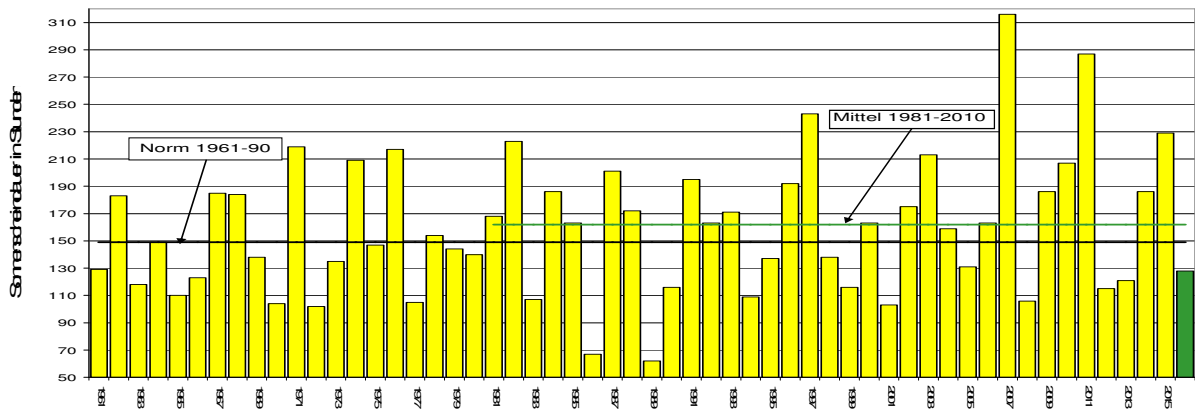


# Die Entwicklung von Temperatur, Sonnenscheindauer und Niederschlagsmenge im Monat April seit 1961: Meteorologische Station Basel Binningen

## Monatsmitteltemperaturen



## Monatliche Sonnenscheindauer



## Monatliche Niederschlagsmengen

