

# Meteorologische Beobachtungen: Monat November 2012

Meteorologische Station Basel-Binningen

317 m ü. M

47° 33' N / 7° 35' E

| Tag | Temperatur     |      |      |      | Luft-<br>druck<br>Mittel | Feuchte        |        | Bewöl-<br>kung<br>in % | Nieder-<br>schlag<br>in mm | Sonne<br>Std | Global-<br>strahl.<br>Wh/m <sup>2</sup> | Wind   |       | Schnee<br>Höhe<br>cm |
|-----|----------------|------|------|------|--------------------------|----------------|--------|------------------------|----------------------------|--------------|---|--------|-------|----------------------|
|     | Mittel<br>24-h | Abw. | Min  | Max  |                          | rel %<br>12:45 | Mittel |                        |                            |              |   | Mittel | m/sec |                      |
| 1.  | 8.7            | 1.9  | 4.6  | 15.8 | 956.9                    | 44             | 60     | 87                     | 1.0                        | 3.8          | 2018                                    | 2.9    | 62    |                      |
| 2.  | 10.6           | 3.9  | 7.3  | 15.6 | 966.8                    | 43             | 55     | 53                     | 3.8                        | 2.9          | 1828                                    | 3.9    | 72    |                      |
| 3.  | 15.1           | 8.6  | 9.4  | 20.0 | 967.7                    | 36             | 43     | 83                     | 7.0                        | 6.6          | 2228                                    | 2.6    | 66    |                      |
| 4.  | 9.7            | 3.3  | 8.2  | 12.7 | 966.7                    | 89             | 92     | 100                    | 17.3                       | 0.1          | 832                                     | 1.6    | 40    |                      |
| 5.  | 7.7            | 1.3  | 4.8  | 11.2 | 970.3                    | 63             | 82     | 93                     | 8.7                        | 2.3          | 1258                                    | 2.7    | 48    |                      |
| 6.  | 5.1            | -1.1 | 4.1  | 7.6  | 982.2                    | 86             | 90     | 60                     | 0.3                        | 1.1          | 784                                     | 1.6    | 36    |                      |
| 7.  | 5.9            | -0.1 | 2.5  | 10.0 | 991.5                    | 58             | 74     | 90                     | -                          | -            | 925                                     | 1.3    | 19    |                      |
| 8.  | 4.7            | -1.1 | 1.0  | 8.6  | 985.6                    | 80             | 87     | 90                     | -                          | 0.8          | 1324                                    | 1.5    | 21    | ReifNebel            |
| 9.  | 7.8            | 2.1  | 2.1  | 14.1 | 978.8                    | 62             | 72     | 60                     | 1.4                        | 7.2          | 2332                                    | 2.2    | 30    | Reif                 |
| 10. | 10.1           | 4.6  | 9.3  | 11.5 | 969.5                    | 95             | 95     | 100                    | 26.1                       | -            | 279                                     | 3.0    | 36    |                      |
| 11. | 9.0            | 3.7  | 8.7  | 10.5 | 975.1                    | 94             | 94     | 100                    | 8.7                        | -            | 376                                     | 1.1    | 25    |                      |
| 12. | 7.7            | 2.6  | 7.5  | 9.4  | 988.1                    | 85             | 87     | 100                    | -                          | -            | 781                                     | 1.2    | 22    |                      |
| 13. | 5.4            | 0.5  | 4.7  | 7.4  | 992.3                    | 83             | 89     | 100                    | -                          | -            | 634                                     | 1.2    | 22    |                      |
| 14. | 4.7            | 0.0  | 1.2  | 10.6 | 988.1                    | 69             | 88     | 53                     | -                          | 5.6          | 1959                                    | 1.5    | 24    | ReifNebel            |
| 15. | 4.7            | 0.2  | 1.8  | 9.8  | 984.5                    | 83             | 92     | 67                     | -                          | 5.3          | 1907                                    | 1.1    | 17    | Nebel                |
| 16. | 4.7            | 0.3  | 2.8  | 9.1  | 981.3                    | 77             | 87     | 50                     | -                          | 7.4          | 2173                                    | 2.2    | 26    |                      |
| 17. | 6.0            | 1.8  | 2.6  | 11.0 | 976.6                    | 73             | 84     | 30                     | -                          | 7.9          | 2056                                    | 3.0    | 30    |                      |
| 18. | 6.7            | 2.7  | 5.1  | 10.7 | 976.1                    | 76             | 85     | 50                     | -                          | 4.5          | 1449                                    | 2.8    | 27    |                      |
| 19. | 4.8            | 1.0  | 3.1  | 9.8  | 979.5                    | 78             | 91     | 70                     | -                          | 4.8          | 1623                                    | 1.7    | 25    | Nebel                |
| 20. | 3.6            | -0.1 | 2.5  | 7.6  | 981.4                    | 71             | 82     | 47                     | -                          | 5.6          | 1845                                    | 2.1    | 25    |                      |
| 21. | 4.0            | 0.4  | -0.5 | 7.5  | 981.2                    | 67             | 77     | 53                     | 0.1                        | 5.2          | 1727                                    | 2.9    | 37    | Reif                 |
| 22. | 7.1            | 3.6  | 4.8  | 9.8  | 985.6                    | 77             | 88     | 87                     | -                          | -            | 517                                     | 1.4    | 19    |                      |
| 23. | 8.1            | 4.8  | 5.2  | 12.2 | 983.3                    | 73             | 81     | 67                     | -                          | 2.9          | 1439                                    | 2.1    | 31    |                      |
| 24. | 9.6            | 6.4  | 6.6  | 9.5  | 980.7                    | 65             | 71     | 90                     | -                          | 3.2          | 1402                                    | 3.3    | 31    |                      |
| 25. | 10.3           | 7.3  | 8.6  | 13.7 | 979.7                    | 78             | 76     | 90                     | 9.2                        | 0.6          | 584                                     | 2.1    | 39    |                      |
| 26. | 9.0            | 6.1  | 8.9  | 10.4 | 972.9                    | 92             | 94     | 100                    | 17.7                       | -            | 191                                     | 2.8    | 39    |                      |
| 27. | 5.6            | 2.8  | 5.0  | 6.4  | 969.3                    | 94             | 95     | 100                    | 17.6                       | -            | 348                                     | 1.2    | 17    |                      |
| 28. | 5.3            | 2.6  | 5.0  | 6.0  | 962.8                    | 97             | 96     | 100                    | 23.3                       | -            | 175                                     | 2.5    | 40    |                      |
| 29. | 2.7            | 0.0  | 1.0  | 4.5  | 964.6                    | 92             | 91     | 77                     | * 4.2                      | -            | 307                                     | 2.2    | 43    |                      |
| 30. | 1.4            | -1.3 | 0.7  | 3.5  | 970.7                    | 80             | 85     | 83                     | -                          | 0.5          | 656                                     | 1.2    | 20    |                      |

|               |     |  |     |      |       |    |    |    |       |      |      |     |  |  |
|---------------|-----|--|-----|------|-------|----|----|----|-------|------|------|-----|--|--|
| <b>Mittel</b> | 6.9 |  | 4.6 | 10.2 | 977.0 | 75 | 83 | 78 |       |      | 1199 | 2.1 |  |  |
| <b>Summe</b>  |     |  |     |      |       |    |    |    | 146.4 | 78.3 |      |     |  |  |
| <b>Norm</b>   | 5.0 |  | 2.0 | 8.8  | 979.6 |    | 76 | 84 | 60    | 77   |      | 2.4 |  |  |

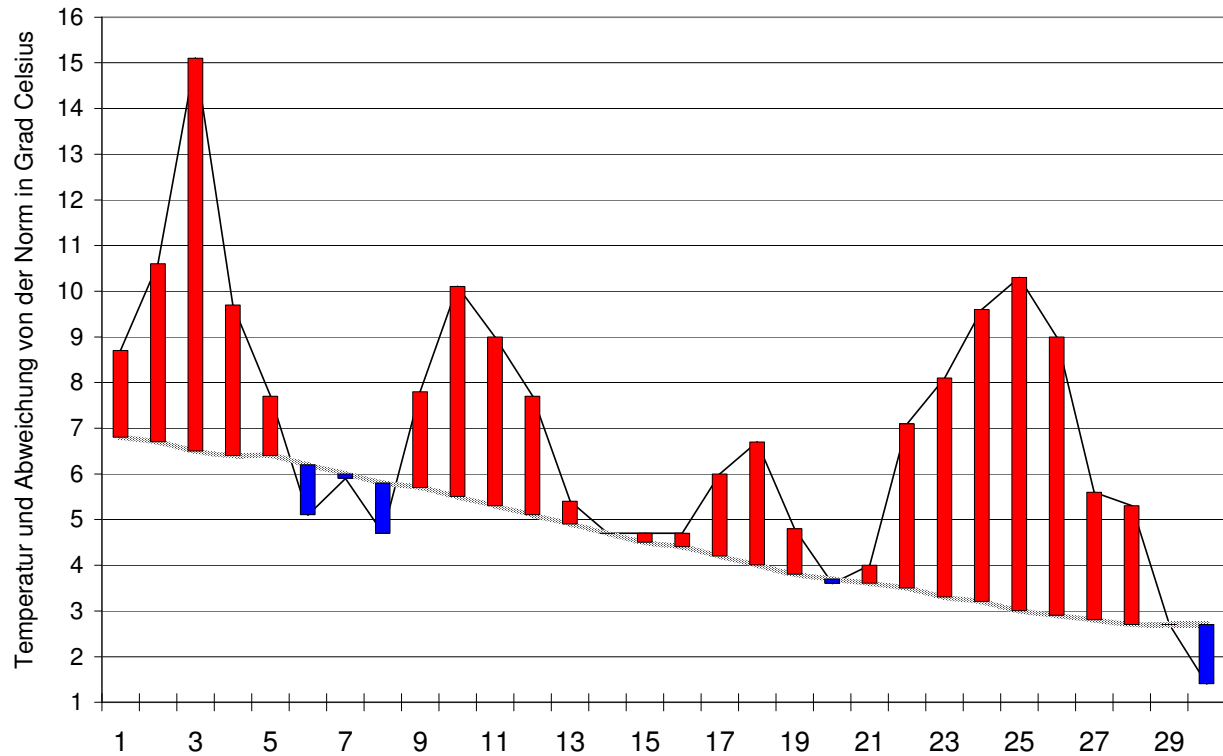
|  |  |      |       |      |                                      |      |      |       |       |         |          |      |      |        |       |    |     |   |
|--|--|------|-------|------|--------------------------------------|------|------|-------|-------|---------|----------|------|------|--------|-------|----|-----|---|
| <b>Luftdruck</b> auf Meeresniveau: 1015.4hPa       | Minimum : 955.1 hPa am 1. um 12:45 h       |      |       |      | Maximum: 993.1 hPa am 13. um 12:45 h |      |      |       |       |         |          |      |      |        |       |    |     |   |
| <b>Temperaturmittel</b> 06:45 h : 5.4°C            | 12:45 h 9.3°C                              |      |       |      | 18:45 h 7.4°C                        |      |      |       |       |         |          |      |      |        |       |    |     |   |
| <b>Spezialtage</b>                                 | Hell                                       | trüb | Frost | Eis  | Niederschlag                         |      |      | Nebel | ohne  | Windmax | Gewitter | Reif | Ha-  | Schnee |       |    |     |   |
|  |  |      | tage  | tage | (mm oder l/m <sup>2</sup> )          |      |      |       | Sonne | (m/s)   |          |      | gel  | fall   | decke |    |     |   |
|  |  |      |       |      | ≥0.1                                 | ≥0.3 | ≥1.0 |       |       | ≥15     | ≥26      | Nahe | Alle |        |       |    |     |   |
| Anzahl Tage  | 0  | 17   | 1     | 0    | 15                                   | 14   | 13   | 4     | 10    | 3       | 0        | 0    | 0    | 4      | 0     |    |     |   |
| Norm   | 2  | 15   | 8     | 1    | 14                                   | 13   | 10   | 5     | 9     | 3       | -        | 0.1  | 0.3  | 6      | 0.1   |    |     |   |
| <b>Windmaximu:</b> 20.0 m/s am 2. um 13:20 aus WSW | <b>Relative Feuchte</b> (Formel SMA): 84 % |      |       |      |                                      |      |      |       |       |         |          |      |      |        |       |    |     |   |
| <b>Windrichtungs-<br/>häufigkeiten</b> (Termine):  | N  | 6    | NE    | 4    | E                                    | 22   | SE   | 15    | S     | 5       | SW       | 9    | W    | 12     | NW    | 11 | CAL | 6 |

|                                   |       |              |       |                 |                 |                 |
|-----------------------------------|-------|--------------|-------|-----------------|-----------------|-----------------|
| <b>Gradtagzahlen</b> 10°C / 18°C: | 308.3 | 12°C / 20°C: | 389.3 | <b>Heiztage</b> | 10°C / 18°C: 26 | 12°C / 20°C: 29 |
|-----------------------------------|-------|--------------|-------|-----------------|-----------------|-----------------|

# Der Verlauf der Temperaturen im Monat November 2012

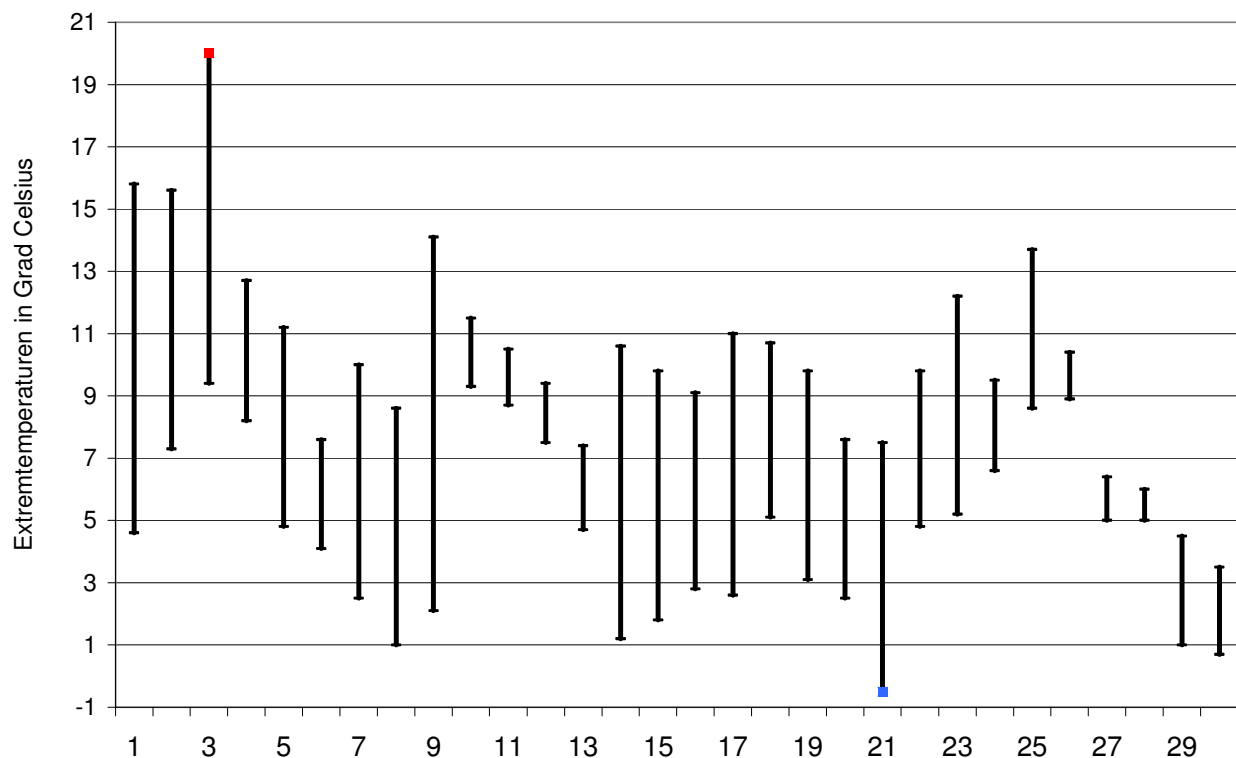
## Meteorologische Station Basel Binningen

**Tagesmittelwerte Temperatur und deren Abweichung von der Normperiode (1901-1990)**  
*aufwärts gerichtete Balken = zu warm, abwärts gerichtete Balken = zu kalt*



### Tägliche Minima und Maxima der Temperatur

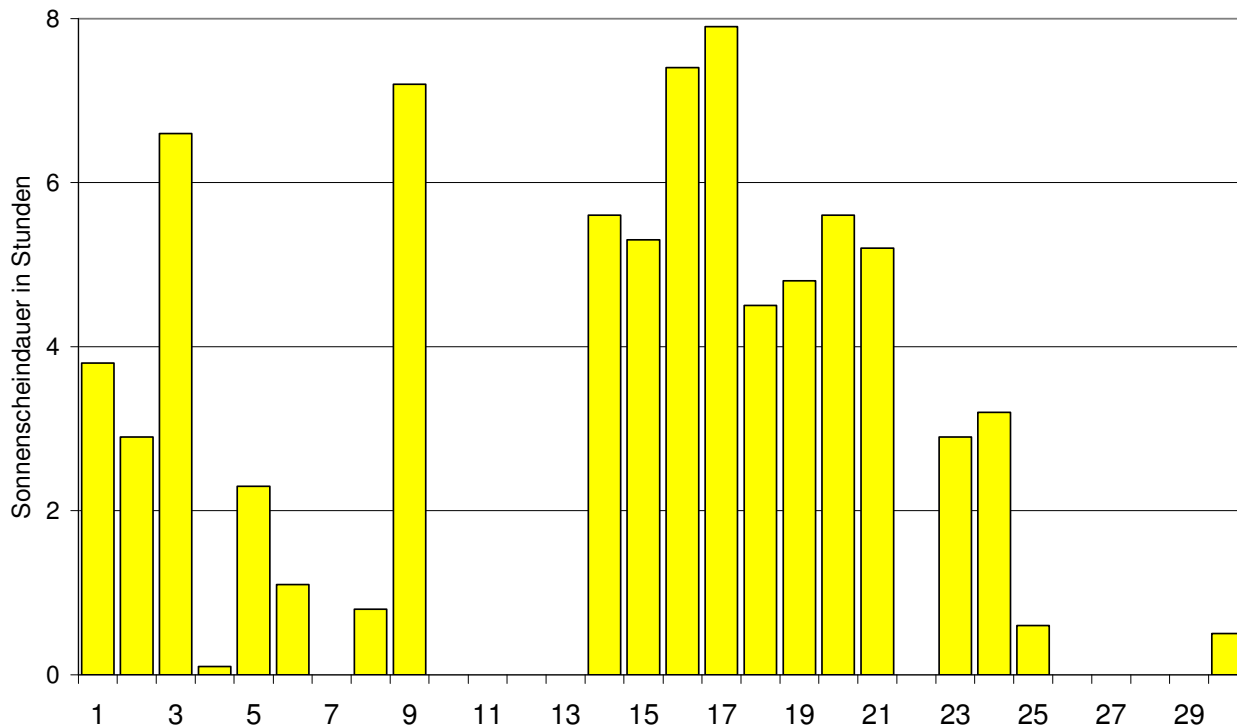
*oberes Balkenende = Maximum, unteres Balkenende = Minimum*



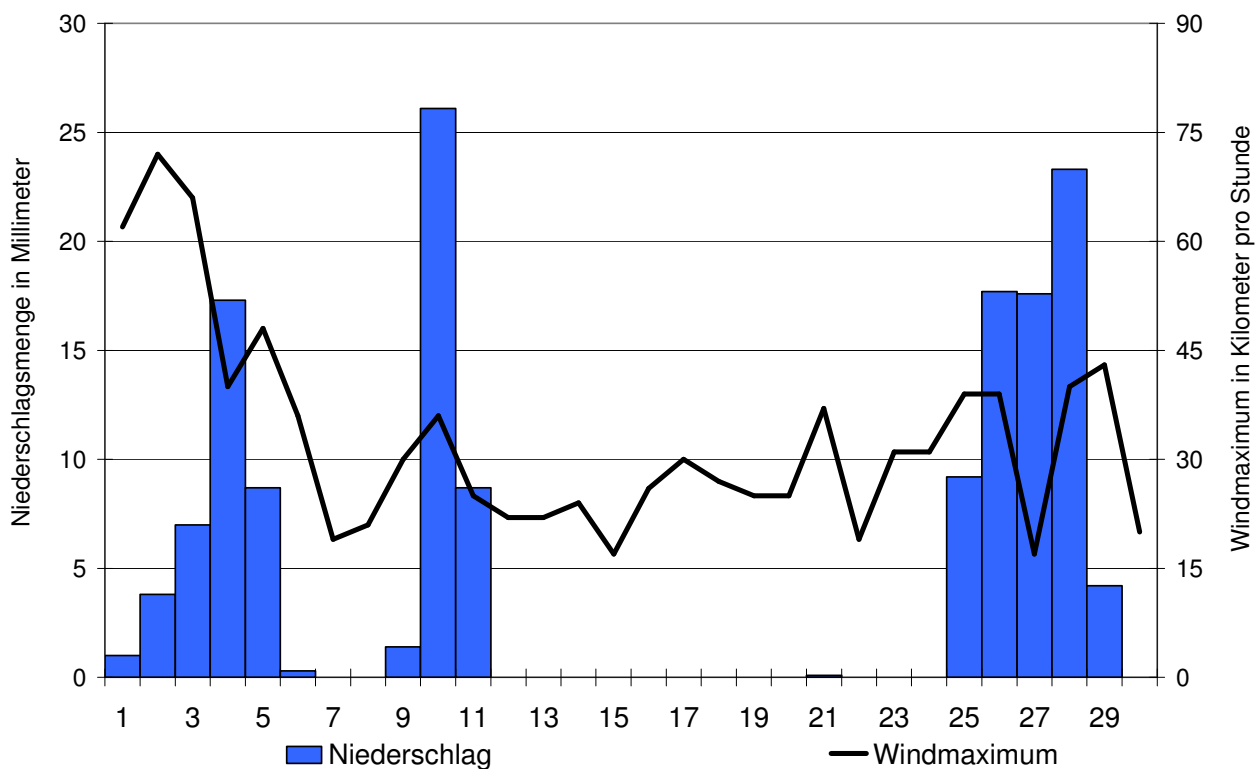
# Der Verlauf von Sonnenscheindauer, Niederschlagsmenge und Windgeschwindigkeit im Monat November 2012

Meteorologische Station Basel Binningen

Tagessummen der Sonnenscheindauer

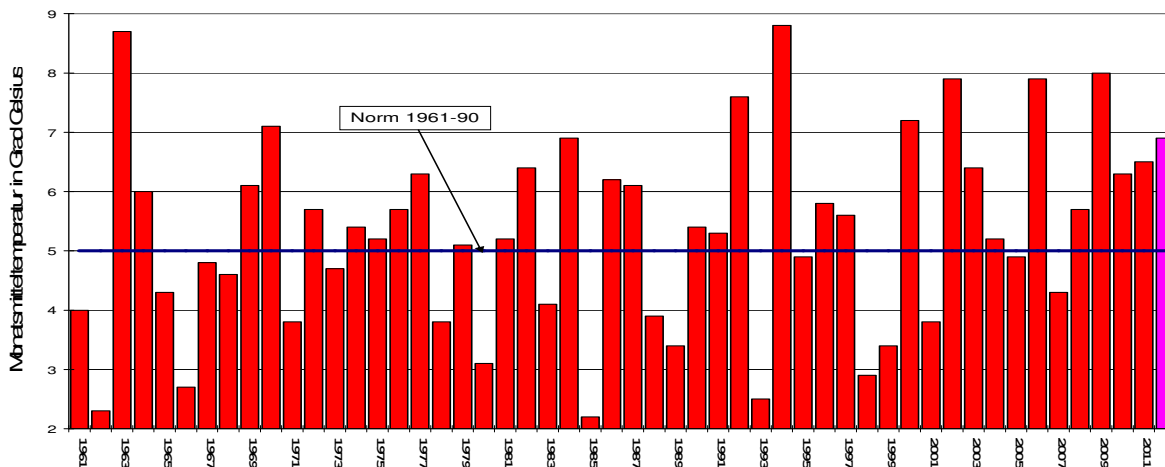


Tagessummen der Niederschlagsmenge (Balken) und maximale tägliche Windgeschwindigkeit (Linie)

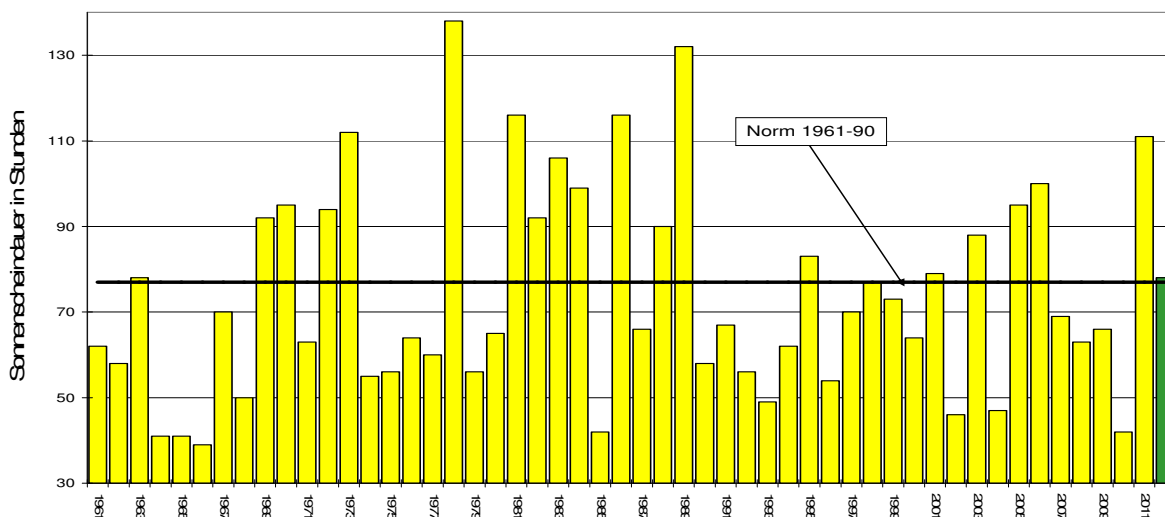


# Die Entwicklung von Temperatur, Sonnenscheindauer und Niederschlagsmenge im Monat November seit 1961: Meteorologische Station Basel Binningen

## Monatsmitteltemperaturen



## Monatliche Sonnenscheindauer



## Monatliche Niederschlagsmengen

