

# Meteorologische Beobachtungen: Monat Februar 2010

Meteorologische Station Basel-Binningen

317 m ü. M

47° 33' N / 7° 35' E

| Tag | Temperatur     |      |      |      | Luft-<br>druck<br>Mittel | Feuchte        |        | Bewöl-<br>kung<br>in % | Nieder-<br>schlag<br>in mm | Sonne<br>Std | Global-<br>strahl.<br>Wh/m <sup>2</sup> | Wind            |             | Schnee-<br>höhe<br>cm |
|-----|----------------|------|------|------|--------------------------|----------------|--------|------------------------|----------------------------|--------------|---|-----------------|-------------|-----------------------|
|     | Mittel<br>24-h | Abw. | Min  | Max  |                          | rel %<br>12:45 | Mittel |                        |                            |              |   | Mittel<br>m/sec | Max<br>Km/h |                       |
| 1.  | -1.5           | -2.5 | -3.6 | 0.0  | 977.9                    | 56             | 68     | 93                     | * 0.0                      | 0.1          | 1057                                    | 2.6             | 40          | 3                     |
| 2.  | 2.0            | 0.9  | -0.8 | 5.1  | 980.8                    | 63             | 60     | 90                     | 1.8                        | 0.2          | 1002                                    | 3.9             | 46          | 2                     |
| 3.  | 5.5            | 4.4  | 3.3  | 9.2  | 977.7                    | 67             | 73     | 87                     | 0.9                        | 2.1          | 1254                                    | 3.9             | 62          |                       |
| 4.  | 3.6            | 2.3  | 0.1  | 8.8  | 976.5                    | 62             | 74     | 87                     | 0.5                        | 7.7          | 2278                                    | 2.7             | 35          | Reif                  |
| 5.  | 3.4            | 2.1  | 1.6  | 5.6  | 972.4                    | 94             | 90     | 100                    | 12.1                       | -            | 334                                     | 2.4             | 36          |                       |
| 6.  | 3.6            | 2.2  | 1.5  | 8.2  | 975.1                    | 80             | 87     | 70                     | 0.0                        | 5.7          | 2103                                    | 2.1             | 32          | Nebel                 |
| 7.  | 2.5            | 1.1  | 0.6  | 3.4  | 979.6                    | 98             | 96     | 100                    | 1.9                        | -            | 167                                     | 1.5             | 28          |                       |
| 8.  | 0.3            | -1.1 | -1.5 | 1.5  | 970.2                    | 67             | 78     | 70                     | -                          | 0.3          | 1055                                    | 3.0             | 40          |                       |
| 9.  | -0.1           | -1.5 | -0.8 | 1.7  | 964.8                    | 81             | 82     | 80                     | * 5.4                      | 2.1          | 1247                                    | 2.6             | 40          |                       |
| 10. | -5.0           | -6.4 | -5.7 | -4.5 | 969.1                    | 84             | 82     | 97                     | * 0.7                      | -            | 802                                     | 2.4             | 27          | 9                     |
| 11. | -5.2           | -6.6 | -6.5 | -3.7 | 967.8                    | 77             | 84     | 100                    | * 1.5                      | -            | 1094                                    | 1.9             | 32          | 8                     |
| 12. | -3.5           | -4.8 | -4.6 | -1.5 | 974.3                    | 75             | 84     | 73                     | * 0.5                      | 1.2          | 1428                                    | 1.5             | 22          | 9                     |
| 13. | -4.4           | -5.7 | -7.9 | -2.3 | 976.4                    | 78             | 82     | 100                    | * 0.2                      | -            | 782                                     | 1.1             | 18          | 8                     |
| 14. | -3.1           | -4.3 | -4.1 | -1.8 | 975.3                    | 79             | 82     | 100                    | * 0.1                      | -            | 1042                                    | 0.9             | 17          | 8                     |
| 15. | -3.2           | -4.4 | -3.5 | -1.0 | 970.9                    | 73             | 78     | 67                     | -                          | -            | 805                                     | 0.9             | 15          | 7                     |
| 16. | -2.1           | -3.4 | -9.0 | 3.8  | 964.7                    | 58             | 68     | 53                     | * , 0.7                    | 8.5          | 2965                                    | 2.2             | 35          | 7                     |
| 17. | 1.7            | 0.4  | -1.0 | 4.5  | 957.9                    | 70             | 81     | 90                     | 4.8                        | -            | 1265                                    | 1.3             | 27          | 4                     |
| 18. | 3.5            | 2.1  | 1.5  | 7.3  | 962.3                    | 84             | 88     | 70                     | 0.6                        | 0.4          | 1005                                    | 2.2             | 35          | 2                     |
| 19. | 3.4            | 1.8  | 2.4  | 4.7  | 959.2                    | 96             | 91     | 97                     | 7.8                        | -            | 499                                     | 2.3             | 36          |                       |
| 20. | 3.0            | 1.2  | 0.8  | 6.8  | 965.1                    | 50             | 71     | 90                     | * , 0.1                    | 1.4          | 1603                                    | 2.2             | 40          |                       |
| 21. | 4.3            | 2.4  | 0.0  | 9.1  | 965.2                    | 54             | 55     | 77                     | 1.7                        | 2.7          | 1881                                    | 2.0             | 24          |                       |
| 22. | 7.6            | 5.5  | 2.8  | 15.3 | 959.4                    | 69             | 70     | 93                     | 0.2                        | 4.1          | 2341                                    | 3.0             | 40          |                       |
| 23. | 9.2            | 6.9  | 6.7  | 13.5 | 961.3                    | 74             | 69     | 90                     | 2.0                        | 1.3          | 1380                                    | 2.8             | 45          |                       |
| 24. | 8.6            | 6.2  | 5.8  | 12.5 | 966.0                    | 72             | 78     | 83                     | 1.6                        | 1.7          | 1840                                    | 2.8             | 55          |                       |
| 25. | 9.4            | 6.8  | 6.3  | 14.6 | 964.0                    | 43             | 68     | 93                     | 12.5                       | 3.9          | 2202                                    | 3.1             | 54          |                       |
| 26. | 8.0            | 5.3  | 4.3  | 11.7 | 964.3                    | 52             | 55     | 90                     | 0.1                        | 2.6          | 1975                                    | 4.9             | 102         |                       |
| 27. | 7.8            | 4.9  | 3.1  | 12.7 | 968.0                    | 36             | 48     | 83                     | 1.8                        | 5.5          | 2928                                    | 3.2             | 37          |                       |
| 28. | 10.7           | 7.7  | 6.4  | 15.8 | 960.4                    | 46             | 58     | 73                     | 0.5                        | 3.1          | 1907                                    | 6.1             | 88          |                       |

|               |     |      |     |       |    |    |    |      |      |      |     |  |  |  |
|---------------|-----|------|-----|-------|----|----|----|------|------|------|-----|--|--|--|
| <b>Mittel</b> | 2.5 | -0.1 | 5.8 | 968.8 | 69 | 75 | 86 |      |      |      |     |  |  |  |
| <b>Summe</b>  |     |      |     |       |    |    |    | 60.0 | 54.6 | 1437 | 2.6 |  |  |  |
| <b>Norm</b>   | 2.3 | -0.8 | 6.3 | 978.6 |    | 81 | 72 | 52   | 83   |      | 2.8 |  |  |  |

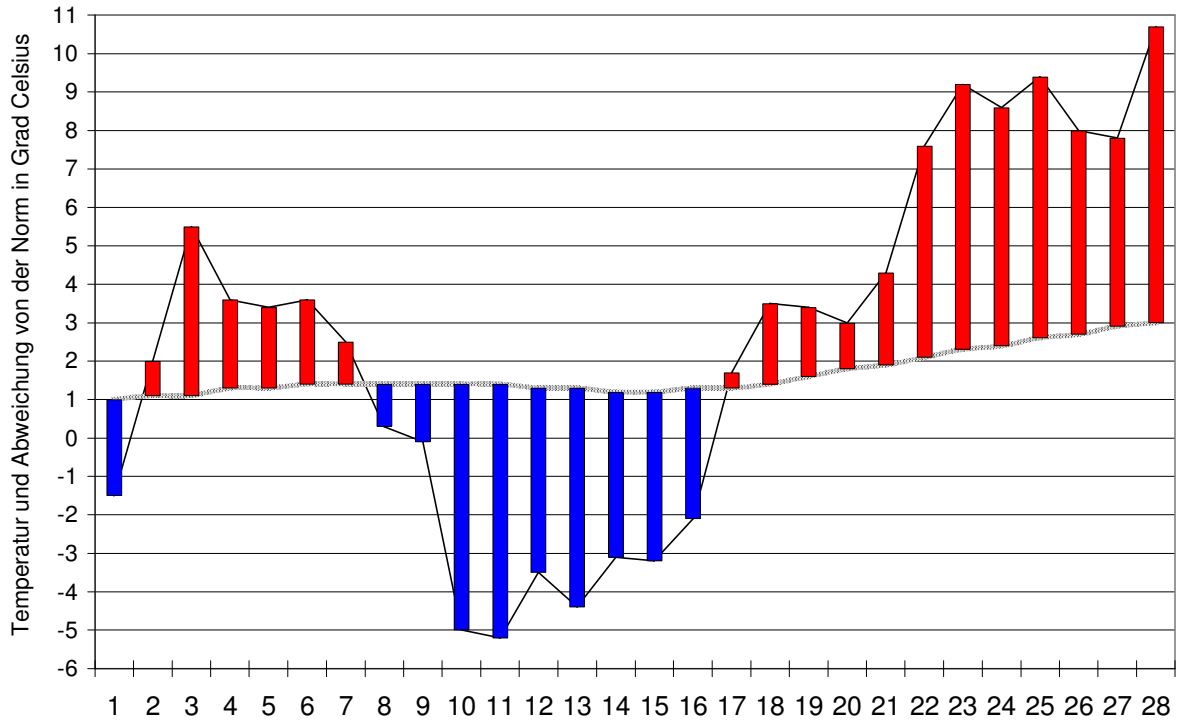
|  |      |                                      |       |     |   |                                     |      |       |               |                  |     |          |      |      |                                   |    |    |     |   |
|--|------|--------------------------------------|-------|-----|---|-------------------------------------|------|-------|---------------|------------------|-----|----------|------|------|-----------------------------------|----|----|-----|---|
| <b>Luftdruck</b> auf Meeresniveau: 1007.5 hPa        |      | Minimum : 954.5 hPa am 28. um 06:45h |       |     |   | Maximum: 982.9 hPa am 2. um 06:45 h |      |       |               |                  |     |          |      |      |                                   |    |    |     |   |
| <b>Temperaturmittel</b> 06:45 h : 0.9 °C             |      | 12:45 h 4.5 °C                       |       |     |   | 18:45 h 3.4 °C                      |      |       |               |                  |     |          |      |      |                                   |    |    |     |   |
| <b>Spezialtage</b>                                   | Hell | trüb                                 | Frost | Eis | Niederschlag<br>(mm oder l/m <sup>2</sup> ) |                                     |      | Nebel | ohne<br>Sonne | Windmax<br>(m/s) |     | Gewitter |      | Reif | Tage mit<br>Schnee-<br>Fall decke |    |    |     |   |
|  |      |                                      |       |     | ≥0.1  | ≥0.3                                | ≥1.0 |       |               | ≥15              | ≥26 | nahe     | Alle |      |                                   |    |    |     |   |
| Anzahl Tage  | 0    | 19                                   | 12    | 6   | 24  | 19                                  | 12   | 2     | 9             | 5                | 1   | 0        | 0    | 2    | 8                                 | 11 |    |     |   |
| Norm   | 3    | 15                                   | 15    | 2   | 14  | 12                                  | 10   | 4     | 8             | 4                | -   | 0.3      | 0.6  | 6    | 6                                 | 7  |    |     |   |
| <b>Windmaximum:</b> 28.3 m/s am 26. um 13:00 h aus W |      |                                      |       |     | <b>Relative Feuchte</b> (Formel SMA): 77    |                                     |      |       |               |                  |     |          |      |      |                                   |    |    |     |   |
| <b>Windrichtungshäufigkeiten</b> (Termine):          |      | N                                    | 6     | NE  | 1   | E                                   | 21   | SE    | 13            | S                | 7   | SW       | 5    | W    | 17                                | NW | 11 | CAL | 3 |

|   |                    |                 |                 |                 |
|---|--------------------|-----------------|-----------------|-----------------|
| <b>Gradtagzahlen</b> 10°C / 18°C: 426.7 | 12°C / 20°C: 490.0 | <b>Heiztage</b> | 10°C / 18°C: 27 | 12°C / 20°C: 28 |
|---|--------------------|-----------------|-----------------|-----------------|

# Der Verlauf der Temperaturen im Monat Februar 2010

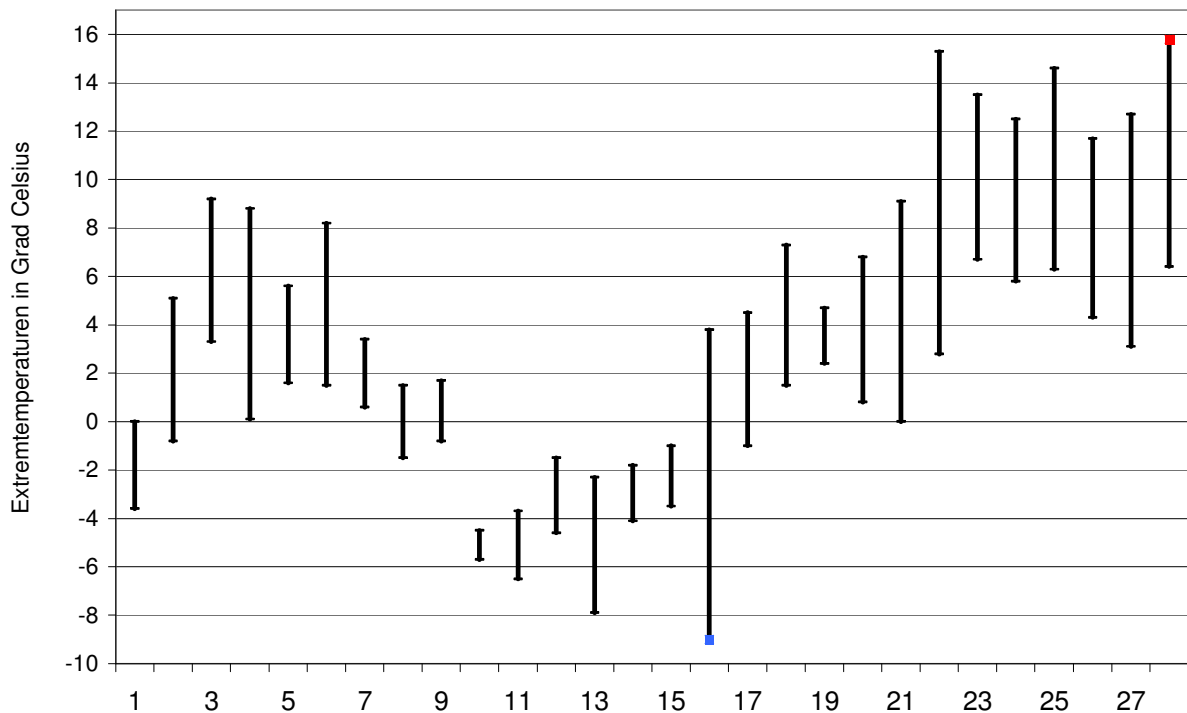
## Meteorologische Station Basel Binningen

**Tagesmittelwerte Temperatur und deren Abweichung von der Normperiode (1901-1990)**  
*aufwärts gerichtete Balken = zu warm, abwärts gerichtete Balken = zu kalt*



### Tägliche Minima und Maxima der Temperatur

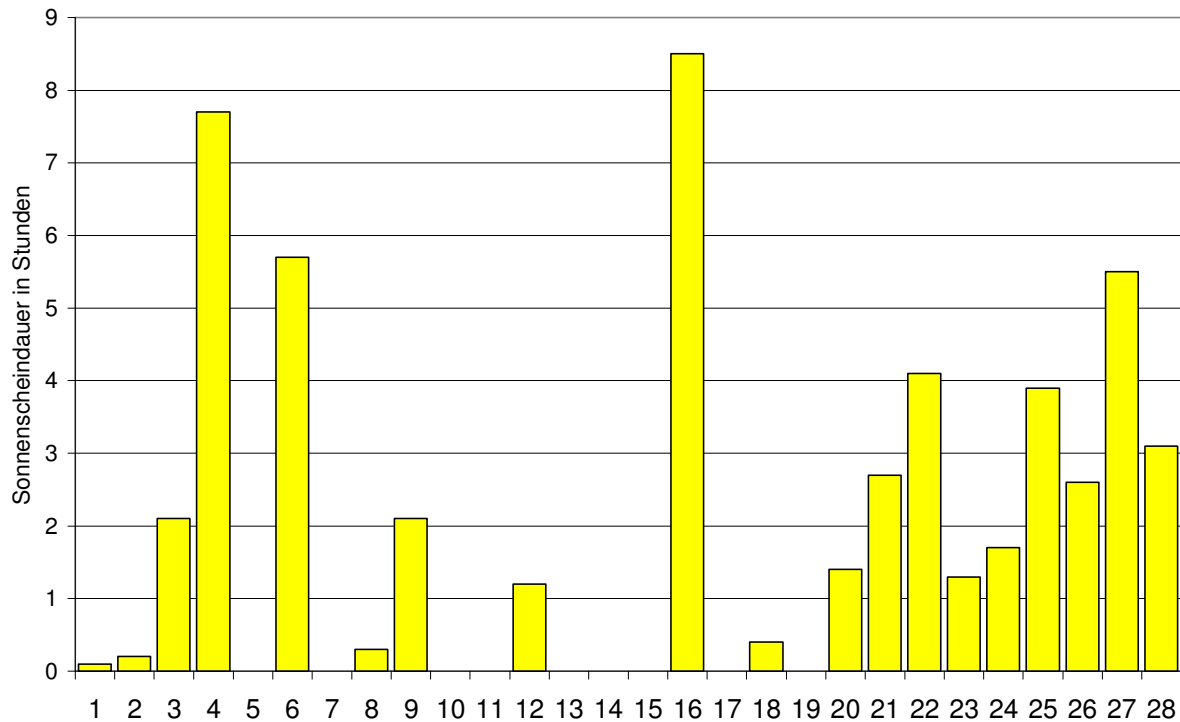
*oberes Balkenende = Maximum, unteres Balkenende = Minimum*



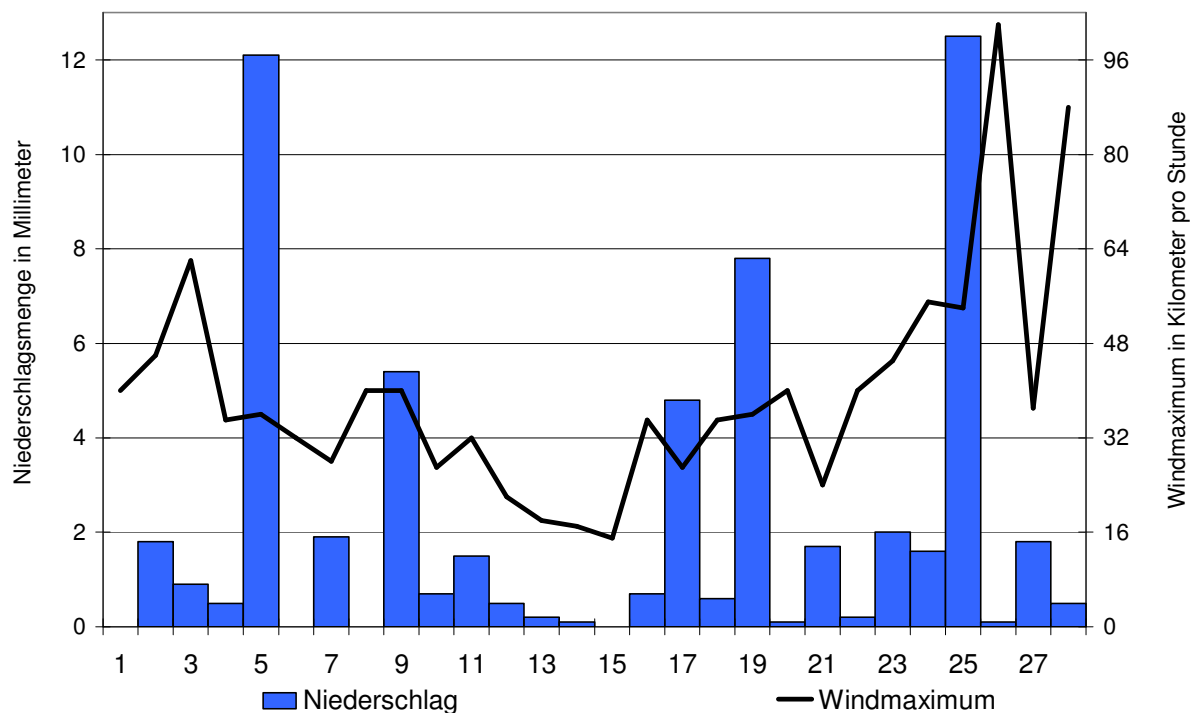
# Der Verlauf von Sonnenscheindauer, Niederschlagsmenge und Windgeschwindigkeit im Monat Februar 2010

Meteorologische Station Basel Binningen

Tagessummen der Sonnenscheindauer

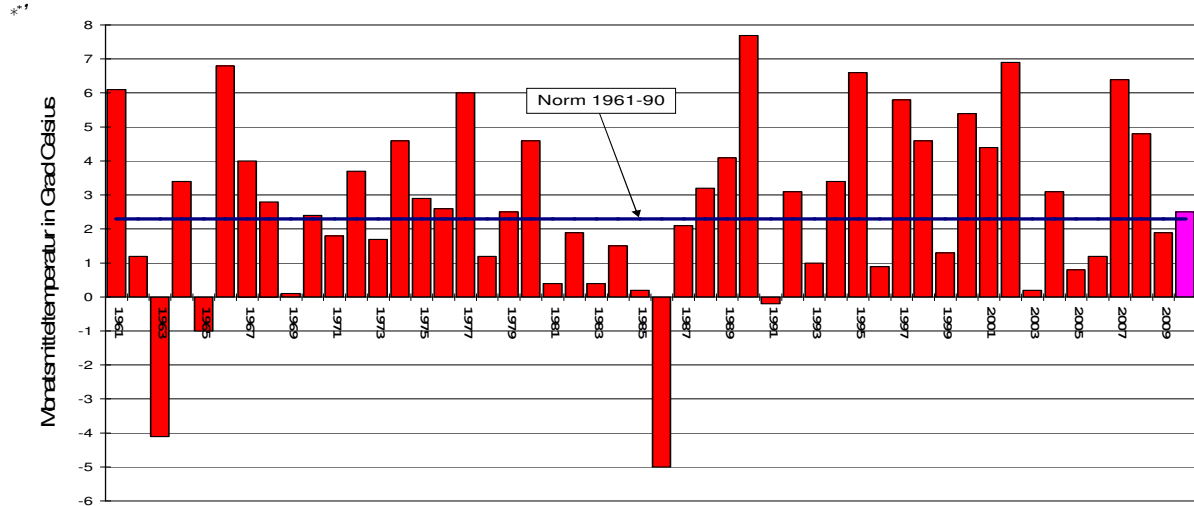


Tagessummen der Niederschlagsmenge (Balken)  
und maximale tägliche Windgeschwindigkeit (Linie)

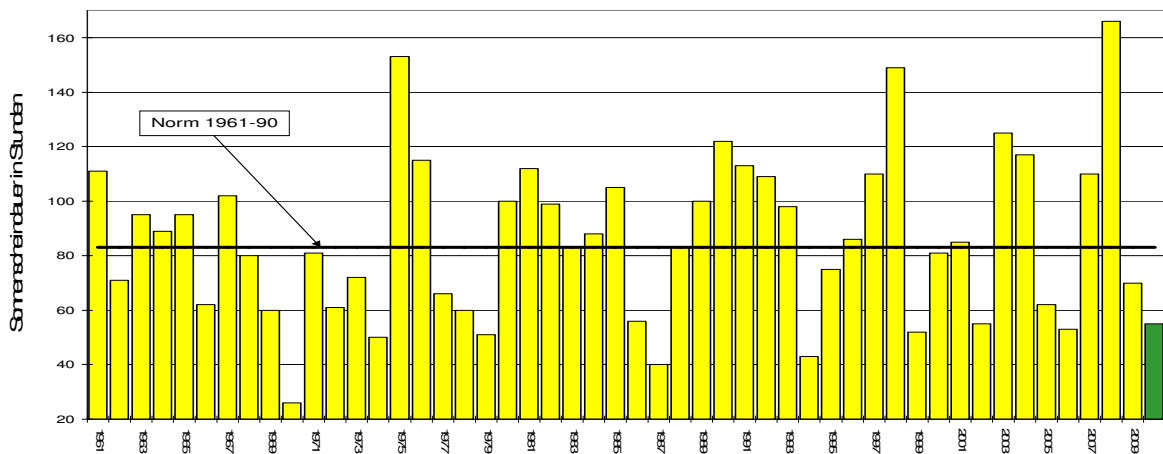


# Die Entwicklung von Temperatur, Sonnenscheindauer und Niederschlagsmenge im Monat Februar seit 1961: Meteorologische Station Basel Binningen

## Monatsmitteltemperaturen



## Monatliche Sonnenscheindauer



## Monatliche Niederschlagsmengen

